

## Product datasheet for **TP305863**

### C1orf85 (GLMP) (NM\_144580) Human Recombinant Protein

#### Product data:

Product Type:	Recombinant Proteins
Description:	Recombinant protein of human chromosome 1 open reading frame 85 (C1orf85), 20 µg
Species:	Human
Expression Host:	HEK293T
Expression cDNA Clone or AA Sequence:	>RC205863 representing NM_144580 Red=Cloning site Green=Tags(s)

MRGSVECTWGWGHCAPSPLLLWTLFFFAPFLLGKTRQVSLEVIPNWLGPLQNLLHIRAVGTNSTLHY  
VWSSLGPLAVVMVATNTPHSTLSVNWSLLLSPEPDGGLMVLPKDSIQFSSALVFTRLLEFDSTNVSDTAA  
KPLGRPYPPYSLADFSWNNITDSLDPATLSATFQGHMNDPTRTFANGSLAFRVQAFSRSSRPAQPPRL  
HTADTCQLEVALIGASPRGNRSLFGLEVATLGQGPDCPSMQEQHSIDDEYAPAVFQLDQLLWGSPLPSGFA  
QWRPVAYSQKPGGRESALPCQASPLHPALAYSLPQSPIVRAFFGSQNNFCAFNLTFGASTGPGYWDQHLY  
SWSMLLGVGFPPVDGLSPLVLGIMAVALGAPGLMLLGGGLVLLLHHKKYSEYQSIN

TRTRPLEQKLISEEDLAANDILDYKDDDDKV

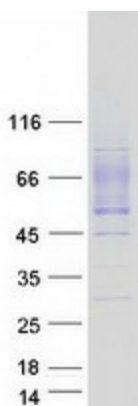
Tag:	C-Myc/DDK
Predicted MW:	43.7 kDa
Concentration:	>0.05 µg/µL as determined by microplate BCA method
Purity:	> 80% as determined by SDS-PAGE and Coomassie blue staining
Buffer:	25 mM Tris-HCl, 100 mM glycine, pH 7.3, 10% glycerol
Preparation:	Recombinant protein was captured through anti-DDK affinity column followed by conventional chromatography steps.
Note:	For testing in cell culture applications, please filter before use. Note that you may experience some loss of protein during the filtration process.
Storage:	Store at -80°C.
Stability:	Stable for 12 months from the date of receipt of the product under proper storage and handling conditions. Avoid repeated freeze-thaw cycles.
RefSeq:	<a href="#">NP_653181</a>
Locus ID:	112770



[View online »](#)

UniProt ID:	<a href="#">Q8WWB7</a>
RefSeq Size:	1603
Cytogenetics:	1q22
RefSeq ORF:	1218
Synonyms:	C1orf85; NCU-G1
Summary:	Required to protect lysosomal transporter MFSD1 from lysosomal proteolysis and for MFSD1 lysosomal localization.[UniProtKB/Swiss-Prot Function]
Protein Families:	Transmembrane

### Product images:



Coomassie blue staining of purified GLMP protein (Cat# TP305863). The protein was produced from HEK293T cells transfected with GLMP cDNA clone (Cat# [RC205863]) using MegaTran 2.0 (Cat# [TT210002]).