

Product datasheet for **TP305857L**

Arylsulfatase D (ARSD) (NM_001669) Human Recombinant Protein

Product data:

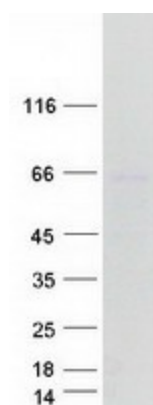
Product Type:	Recombinant Proteins
Description:	Recombinant protein of human arylsulfatase D (ARSD), transcript variant 1, 1 mg
Species:	Human
Expression Host:	HEK293T
Expression cDNA Clone or AA Sequence:	>RC205857 representing NM_001669 Red =Cloning site Green =Tags(s)
	<p>MRSAARRGRAAPAARDSLPVLLFLCLLLKTCEPKTANAFKPNILLIMADDLGTGDLGCYGNNTLRTPNID QLAEEGVRLTQHLLAAAPLCTPSRAAFLTGRHSFRSGMDASNGYRALQWNAGSGGLPENETTFARILQQHG YATGLIGKWHQGVNCASRGDHCHHPLNHGFDYFYGMPFTLTNDCDPGRPEVDAALRAQLWGYTQFLALG ILTLAAGQTCGFFSVSARAVTGMAGVGCLFFISWYSSFGFVRRWNCILMRNHVDTEQPMVLEKTASLMLK EAVSYIERHKKHGPFLFLSLLHVHIPLVTTSAFLGKSQHGLYGDNVEEMDWLIGKVLNAIEDNGLKNSTF TYFTSDHGGHLEARDGHSQLGGWNGIYKGGKMGWEGGIRVPGIFHWPVLPAGRVIGEPTSLMDVFPT VVQLVGGVEVPQDRVIDGHSLVPLLQGAEARSAHEFLFHYCGQHLHAARWHQKDSGSVWVKVHYTTPQFHPE GAGACYGRGVCPCSGEGVTHHRPPLLFDLSRDPSEARPLTPDSEPLYHAVIARVGAADVSEHRQTLSPVPQ QFSMSNILWKPWLQPCCGHFPFCSCHEDGDGTP</p> <p>TRTRPLEQKLISEEDLAANDILDYKDDDDKV</p>
Tag:	C-Myc/DDK
Predicted MW:	61.2 kDa
Concentration:	>0.05 µg/µL as determined by microplate BCA method
Purity:	> 80% as determined by SDS-PAGE and Coomassie blue staining
Buffer:	25 mM Tris-HCl, 100 mM glycine, pH 7.3, 10% glycerol
Preparation:	Recombinant protein was captured through anti-DDK affinity column followed by conventional chromatography steps.
Note:	For testing in cell culture applications, please filter before use. Note that you may experience some loss of protein during the filtration process.
Storage:	Store at -80°C.



[View online »](#)

Stability:	Stable for 12 months from the date of receipt of the product under proper storage and handling conditions. Avoid repeated freeze-thaw cycles.
RefSeq:	<u>NP_001660</u>
Locus ID:	414
UniProt ID:	<u>P51689, A0A140VK06</u>
RefSeq Size:	5159
Cytogenetics:	Xp22.33
RefSeq ORF:	1779
Synonyms:	ASD
Summary:	The protein encoded by this gene is a member of the sulfatase family. Sulfatases are essential for the correct composition of bone and cartilage matrix. The encoded protein is postranslationally glycosylated and localized to the lysosome. This gene is located within a cluster of similar arylsulfatase genes on chromosome X. A related pseudogene has been identified in the pseudoautosomal region of chromosome Y. [provided by RefSeq, Jul 2011]
Protein Families:	Druggable Genome, Transmembrane

Product images:



Coomassie blue staining of purified ARSD protein (Cat# [TP305857]). The protein was produced from HEK293T cells transfected with ARSD cDNA clone (Cat# [RC205857]) using MegaTran 2.0 (Cat# [TT210002]).