

Product datasheet for TP305848M

MSH2 (NM_000251) Human Recombinant Protein

Product data:

Product Type:	Recombinant Proteins
Description:	Recombinant protein of human mutS homolog 2, colon cancer, nonpolyposis type 1 (E. coli) (MSH2), 100 µg
Species:	Human
Expression Host:	HEK293T
Expression cDNA Clone or AA Sequence:	>RC205848 protein sequence Red =Cloning site Green =Tags(s)

MAVQPKETLQLESAAEVGFVRRFFQGMPEKPTTTVRLFDRGDFYTAHGEDALLAAREVFKTQGVIKYMGPA
GAKNLQSVVLSKMNFEFVKDLLLVRQYRVEVYKNRAGNKASKENDWYLAYKASPGNLSQFEDILFGNND
MSASIGVVGKMSAVDGGQRQVGVGYVDSIQRKLGCEFPDNDQFSNLEALLIQIGPKECVLPGGETAGDM
GKLRQIIQRGGILITERKKADFSTKDIYQDLNRLKGGKGEQMNSAVLPEMENQVAVSSLSAVIKFLELL
SDDSNFGQFELTTFDFSQYMKLDIAAVRALNLFQGSVEDTTGSQSLAALLNKCKTPQGQRLVNQWIKQPL
MDKNRIEERLNLVEAFVEDAELRQLQEDLLRRFPDLNRLAKKFQRQAANLQDCYRLYQGINQLPNVIQA
LEKHGKHQKLLAVFVPLTDLRSDFSKFQEMIETTLDMQVENHEFLVKPSFDPNLSELREIMNDLEK
KMQSTLISAARDLGLDPGKQIKLDSSAQFGYYFRVTCKEEKVLRNNKNFSTVDIQKNGVKFTNSKLTSLN
EYTKNKTEYEEAQDAIVKEIVNISSGYVEPMQTLNDVLAQLDAVVSFAHVSNGAPVYVVRPAILEKGGQ
RIILKASRHACVEVQDEIAFIPNDVYFEKDKQMFHIITGPNMGGKSTYIRQTGVIVLMAQIGCFVPCESA
EVSIVDCILARVGAGDSQLKGVSTFMAEMLETASILRSATKDSLIIIDELGRGTSTYDGFGLAWAISEYI
ATKIGAFCMFATHFELTALANQIPTVNNLHVLTALTTEETLTMLYQVKKGVCDQSFGIHVAELANFPKHV
IECAKQKALELEEFQYIGESQGYDIMEPAAKKCYLEREQGEKIIQEFLSKVKQMPFTEMSEENITIKLKQ
LKAEVIKNNNSFVNEIISRIKVT

TRTRPLEQKLISEEDLAANDILDYKDDDDKV

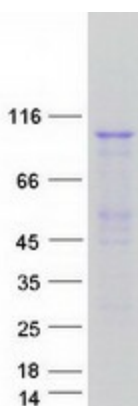
Tag:	C-Myc/DDK
Predicted MW:	104.6 kDa
Concentration:	>0.05 µg/µL as determined by microplate BCA method
Purity:	> 80% as determined by SDS-PAGE and Coomassie blue staining
Buffer:	25 mM Tris-HCl, 100 mM glycine, pH 7.3, 10% glycerol



[View online »](#)

Preparation:	Recombinant protein was captured through anti-DDK affinity column followed by conventional chromatography steps.
Note:	For testing in cell culture applications, please filter before use. Note that you may experience some loss of protein during the filtration process.
Storage:	Store at -80°C.
Stability:	Stable for 12 months from the date of receipt of the product under proper storage and handling conditions. Avoid repeated freeze-thaw cycles.
RefSeq:	NP_000242
Locus ID:	4436
UniProt ID:	P43246
RefSeq Size:	3226
Cytogenetics:	2p21-p16.3
RefSeq ORF:	2802
Synonyms:	COCA1; FCC1; hMSH2; HNPCC; HNPCC1; LCFS2; MMRCS2
Summary:	This locus is frequently mutated in hereditary nonpolyposis colon cancer (HNPCC). When cloned, it was discovered to be a human homolog of the E. coli mismatch repair gene mutS, consistent with the characteristic alterations in microsatellite sequences (RER+ phenotype) found in HNPCC. Two transcript variants encoding different isoforms have been found for this gene. [provided by RefSeq, Apr 2012]
Protein Families:	Druggable Genome, Stem cell - Pluripotency
Protein Pathways:	Colorectal cancer, Mismatch repair, Pathways in cancer

Product images:



Coomassie blue staining of purified MSH2 protein (Cat# [TP305848]). The protein was produced from HEK293T cells transfected with MSH2 cDNA clone (Cat# [RC205848]) using MegaTran 2.0 (Cat# [TT210002]).