

Product datasheet for **TP305839M**

WSB1 (NM_015626) Human Recombinant Protein

Product data:

Product Type: Recombinant Proteins

Description: Recombinant protein of human WD repeat and SOCS box-containing 1 (WSB1), transcript variant 1, 100 µg

Species: Human

Expression Host: HEK293T

Expression cDNA Clone or AA Sequence: >RC205839 protein sequence
Red=Cloning site **Green**=Tags(s)

MASFPPRVNEKEIVRLRTIGELLAPAAPFDKCKGRENWTVAFAPDGSYFAWSQGHRTVKLVPWSQCLQNF
LLHGTKNVTNSSLRLPRQNSDGGQKNKPREHIIDCGDIVWSLAFGSSVPEKQSRCVNIWHRFRFGQDQ
LLLATGLNNGRIKIWDVYTGKLLLNLVDHTEVVRDLTFAPDGSLLVLSASRDKTLRVWDLKDDGNMMKVL
RGHQNWVYSCAFSPDSSMLCSVGASKAVFLWNMDKYTMIRKLEGGHHHDVVACDFSPDGALLATASYDTRV
YIWDPHNGDILMEFGHLFPPTPIFAGGANDRWVRSVSFSHDGLHVASLADDKMVRFWRIDEDYPVQVAP
LSNGLCCAFSTDGSLAAGTHDGSVYFWATPRQVPSLQHLCRMSIRRVMPQTQEVQELPIPSKLLLEFLSYR
I

TRTRPLEQKLISEEDLAANDILDYKDDDDKV

Tag: C-Myc/DDK

Predicted MW: 47.3 kDa

Concentration: >0.05 µg/µL as determined by microplate BCA method

Purity: > 80% as determined by SDS-PAGE and Coomassie blue staining

Buffer: 25 mM Tris-HCl, 100 mM glycine, pH 7.3, 10% glycerol

Preparation: Recombinant protein was captured through anti-DDK affinity column followed by conventional chromatography steps.

Note: For testing in cell culture applications, please filter before use. Note that you may experience some loss of protein during the filtration process.

Storage: Store at -80°C.

Stability: Stable for 12 months from the date of receipt of the product under proper storage and handling conditions. Avoid repeated freeze-thaw cycles.



[View online »](#)

RefSeq: [NP_056441](#)

Locus ID: 26118

UniProt ID: [Q9Y6I7](#), [A0A024QZ51](#), [Q8NC76](#)

RefSeq Size: 2849

Cytogenetics: 17q11.1

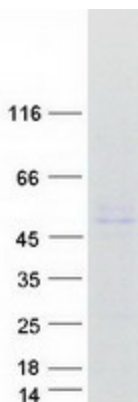
RefSeq ORF: 1263

Synonyms: SWIP1; WSB-1

Summary: This gene encodes a member of the WD-protein subfamily. This protein shares a high sequence identity to mouse and chick proteins. It contains several WD-repeats spanning most of the protein and an SOCS box in the C-terminus. Alternatively spliced transcript variants encoding distinct isoforms have been found for this gene. [provided by RefSeq, Jul 2008]

Protein Families: Druggable Genome

Product images:



Coomassie blue staining of purified WSB1 protein (Cat# [TP305839]). The protein was produced from HEK293T cells transfected with WSB1 cDNA clone (Cat# [RC205839]) using MegaTran 2.0 (Cat# [TT210002]).