

Product datasheet for TP305839L

WSB1 (NM_015626) Human Recombinant Protein

Product data:

| | |
|---------------------------------------|---|
| Product Type: | Recombinant Proteins |
| Description: | Recombinant protein of human WD repeat and SOCS box-containing 1 (WSB1), transcript variant 1, 1 mg |
| Species: | Human |
| Expression Host: | HEK293T |
| Expression cDNA Clone or AA Sequence: | >RC205839 protein sequence Red=Cloning site Green=Tags(s) |
| | <p>MASFPPRVNEKEIVRLRTIGELLAPAAPFDKCKGRENWTVAFAPDGSYFAWSQGHRTVKLPWSQCLQNF LLHGTKNVTNSSLRRLPRQNSDGGQKNKPREHIIDCGDIVWSLAFGSSVPEKQSRCVNIWHRFRFGQDQ LLLATGLNNGRIKIWDVYTGKLLLNLVDHTEVVRDLTFAPDGSLLVLSASRDKTLRVWDLKDDGNMMKVL RGHQNWVYSCAFSPDSSMLCSVGASKAVFLWNMDKYTMIRKLEGGHHHDVVACDFSPDGALLATASYDTRV YIWDPHNGDILMEFGHLFPPPTPIFAGGANDRWVRSVSFSHDGLHVASLADDKMVRFWRIDEDYPVQVAP LSNGLCCAFSTDGSLAAGTHDGSVYFWATPRQVPSLQHLCRMSIRRVMPQTQEVQELPIPSKLLLEFLSYR I</p> <p>TRTRPLEQKLISEEDLAANDILDYKDDDDKV</p> |
| Tag: | C-Myc/DDK |
| Predicted MW: | 47.3 kDa |
| Concentration: | >0.05 µg/µL as determined by microplate BCA method |
| Purity: | > 80% as determined by SDS-PAGE and Coomassie blue staining |
| Buffer: | 25 mM Tris-HCl, 100 mM glycine, pH 7.3, 10% glycerol |
| Preparation: | Recombinant protein was captured through anti-DDK affinity column followed by conventional chromatography steps. |
| Note: | For testing in cell culture applications, please filter before use. Note that you may experience some loss of protein during the filtration process. |
| Storage: | Store at -80°C. |
| Stability: | Stable for 12 months from the date of receipt of the product under proper storage and handling conditions. Avoid repeated freeze-thaw cycles. |



[View online »](#)

RefSeq: [NP_056441](#)

Locus ID: 26118

UniProt ID: [Q9Y6I7](#)

RefSeq Size: 2849

Cytogenetics: 17q11.1

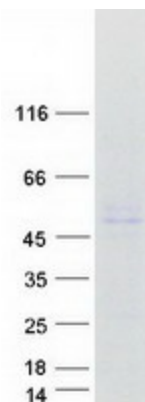
RefSeq ORF: 1263

Synonyms: SWIP1; WSB-1

Summary: This gene encodes a member of the WD-protein subfamily. This protein shares a high sequence identity to mouse and chick proteins. It contains several WD-repeats spanning most of the protein and an SOCS box in the C-terminus. Alternatively spliced transcript variants encoding distinct isoforms have been found for this gene. [provided by RefSeq, Jul 2008]

Protein Families: Druggable Genome

Product images:



Coomassie blue staining of purified WSB1 protein (Cat# [TP305839]). The protein was produced from HEK293T cells transfected with WSB1 cDNA clone (Cat# [RC205839]) using MegaTran 2.0 (Cat# [TT210002]).