

Product datasheet for TP305839

WSB1 (NM_015626) Human Recombinant Protein

Product data:

Product Type:	Recombinant Proteins
Description:	Recombinant protein of human WD repeat and SOCS box-containing 1 (WSB1), transcript variant 1, 20 µg
Species:	Human
Expression Host:	HEK293T
Expression cDNA Clone or AA Sequence:	>RC205839 protein sequence Red=Cloning site Green=Tags(s)

MASFPDRVNEKEIVRLRTIGELLAPAAPFDKCKGRENWTVAFAPDGSYFAWSQGHRTVKLVLPWSQCLQNF
LLHGTKNVTNSSLRRLPRQNSDGGQKNKPREHIIDCGDIVWSLAFGSSVPEKQSRCVNIWHRFRFGQDQ
LLLATGLNNGRIKIWDVYTGKLLLNLVDHTEVVRDLTFAPDGSLLVLSASRDKTLRVWDLKDDGNMMKVL
RGHQNWVYSCAFSPDSSMLCSVGASKAVFLWNMDKYTMIRKLEGGHHHDVVACDFSPDGALLATASYDTRV
YIWDPHNGDILMEFGHLFPPTPIFAGGANDRWVRSVSFSHDGLHVASLADDKMVRFWRIDEDYPVQVAP
LSNGLCCAFSTDGSLAAGTHDGSVYFWATPRQVPSLQHLCRMSIRRVMPQTQEVQELPIPSKLLLEFLSYR
I

TRTRPLEQKLISEEDLAANDILDYKDDDDKV

Tag:	C-Myc/DDK
Predicted MW:	47.3 kDa
Concentration:	>0.05 µg/µL as determined by microplate BCA method
Purity:	> 80% as determined by SDS-PAGE and Coomassie blue staining
Buffer:	25 mM Tris-HCl, 100 mM glycine, pH 7.3, 10% glycerol
Preparation:	Recombinant protein was captured through anti-DDK affinity column followed by conventional chromatography steps.
Note:	For testing in cell culture applications, please filter before use. Note that you may experience some loss of protein during the filtration process.
Storage:	Store at -80°C.
Stability:	Stable for 12 months from the date of receipt of the product under proper storage and handling conditions. Avoid repeated freeze-thaw cycles.



[View online »](#)

RefSeq: [NP_056441](#)

Locus ID: 26118

UniProt ID: [Q9Y6I7](#), [A0A024QZ51](#), [Q8NC76](#)

RefSeq Size: 2849

Cytogenetics: 17q11.1

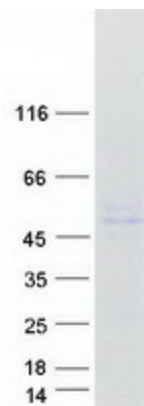
RefSeq ORF: 1263

Synonyms: SWIP1; WSB-1

Summary: This gene encodes a member of the WD-protein subfamily. This protein shares a high sequence identity to mouse and chick proteins. It contains several WD-repeats spanning most of the protein and an SOCS box in the C-terminus. Alternatively spliced transcript variants encoding distinct isoforms have been found for this gene. [provided by RefSeq, Jul 2008]

Protein Families: Druggable Genome

Product images:



Coomassie blue staining of purified WSB1 protein (Cat# TP305839). The protein was produced from HEK293T cells transfected with WSB1 cDNA clone (Cat# [RC205839]) using MegaTran 2.0 (Cat# [TT210002]).