

Product datasheet for **TP305834**

CPSF73 (CPSF3) (NM_016207) Human Recombinant Protein

Product data:

Product Type:	Recombinant Proteins
Description:	Recombinant protein of human cleavage and polyadenylation specific factor 3, 73kDa (CPSF3), 20 µg
Species:	Human
Expression Host:	HEK293T
Expression cDNA Clone or AA Sequence:	>RC205834 protein sequence Red =Cloning site Green =Tags(s)

MSAIPAEESDQLLIRPLGAGQEVGRSCIILEFKGRKIMLDCGIHPGLEGM DALPYIDLIDPAEIDLLIS
HFHLDHCGALPWFLQKTSFKGRTFMTHATKAIYRWLLSDYVKVSNISADDMLYTETDLEESMDKIETINF
HEVKEVAGIKFWCYHAGHVLGAAMFMIEIAGVKLLYTGDFSRQEDRHLMAAEIPNIKPDILIIESTYGT
IHEKREEREARFCNTVHDIVNRGGRGLIPVFALGRAQELLILDEYWQNHPELHDIPIYYASSLAKKCM
VYQTYVNAMNDKIRKQININNPVFKHISNLKSMDFDDIGPSVVMASPGMMQSGLSRELFESWCTDKRN
GVIIAGYCV EGT LAKHIMSEPEEITMSGQKLPLKMSVDYISFSAHTDYQQTSEFIRALKPPHVILVHGE
QNE MARLKAALIREYEDNDEVHIEVHNPRNTEAVTLNFRGEKLAKVMGFLADKKPEQGQRVSGILVKRNF
NYHILSPCDLSNYTDLAMSTVKQTQAIPYTGPFNLLCYQLQKLTGDVEELEIQEKPAKLVFKNITVIQEP
GMVLEWLANPSNDMYADTVTTVILEVQSNPKIRKGA VQKVS KLEMHVYSKRLEIMLQDIFGEDCVSVK
DDSILSVTDGKTANLNLETRTVECEESEDESREMVELAAQRLYEALTPVH

TRTRPLEQKLISEEDLAANDILDYKDDDDKV

Tag:	C-Myc/DDK
Predicted MW:	77.3 kDa
Concentration:	>0.05 µg/µL as determined by microplate BCA method
Purity:	> 80% as determined by SDS-PAGE and Coomassie blue staining
Buffer:	25 mM Tris-HCl, 100 mM glycine, pH 7.3, 10% glycerol
Preparation:	Recombinant protein was captured through anti-DDK affinity column followed by conventional chromatography steps.
Note:	For testing in cell culture applications, please filter before use. Note that you may experience some loss of protein during the filtration process.
Storage:	Store at -80°C.



[View online »](#)

Stability: Stable for 12 months from the date of receipt of the product under proper storage and handling conditions. Avoid repeated freeze-thaw cycles.

RefSeq: [NP_057291](#)

Locus ID: 51692

UniProt ID: [Q9UKF6](#)

RefSeq Size: 2401

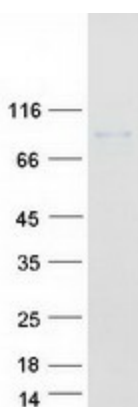
Cytogenetics: 2p25.1

RefSeq ORF: 2052

Synonyms: CPSF-73; CPSF73

Summary: This gene encodes a member of the metallo-beta-lactamase family. The encoded protein is a 73kDa subunit of the cleavage and polyadenylation specificity factor and functions as an endonuclease that recognizes the pre-mRNA 3'-cleavage site AAUAAA prior to polyadenylation. It also cleaves after the pre-mRNA sequence ACCCA during histone 3'-end pre-mRNA processing. [provided by RefSeq, Oct 2012]

Product images:



Coomassie blue staining of purified CPSF3 protein (Cat# TP305834). The protein was produced from HEK293T cells transfected with CPSF3 cDNA clone (Cat# [RC205834]) using MegaTran 2.0 (Cat# [TT210002]).