

## Product datasheet for **TP305830L**

### EFHC1 (NM\_018100) Human Recombinant Protein

#### Product data:

Product Type:	Recombinant Proteins
Description:	Recombinant protein of human EF-hand domain (C-terminal) containing 1 (EFHC1), 1 mg
Species:	Human
Expression Host:	HEK293T
Expression cDNA Clone or AA Sequence:	>RC205830 protein sequence <b>Red</b> =Cloning site <b>Green</b> =Tags(s)

MVSNPVHGLPFLPGTSFKDSTKTAFHRSQTLNRYNGYAIVRRPTVIGIGDRLQFNQLSQAELDELASKAP  
VLTYGQPKQAPPADFIHVAHVAFDKVKLKFDAYFQEDVPMSTEEQYRIRQVNIYYLEDDSMSVIEPVEN  
SGILQGKLIKRLAKNDRGDHYHWKDLNRGINITYGKTRVWDCDQFTQVFLESQGIENPPEKMALD  
PYTELKQPLRKYVTPSDFDQLKQFLTFDKQVLRFYAIWDDTDSMYGECRTYIIHYLMDDTVEIREVHE  
RNDGIDPFLLMNRQRPVKVLVENAKNFPQCVLEISDQEVLEWYAKDFIVGKSLTILGRFFIYDCDPF  
TRRYKKEKFGITDLPRIDVSKREPPPVKQELPPYNGFGLVEDSAQNCFALIPKAPKKDVIKMLVNDNKVL  
RYLAVLESPIPEDKDRRFVFSYFLATDMISIFEPVNRNSGIIIGGKYLGRTKVVKPYSTVDNPVYGGPSDF  
FIGAVIEVFGHRFIILDTDEYVLKYMESNAQYSPEALASIQNHVRKREAPAPEAESKQTEKDPGVQELE  
ALIDTIQKQLKDHSCDNIREAFQIYDKEASGYVDRDMFFKICESLNPVDDSLVKELLRMCSHGEGKIN  
YVNFVRAFSN

**TRTRPLEQKLISEEDLAANDILDYKDDDDKV**

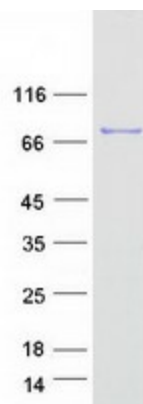
Tag:	C-Myc/DDK
Predicted MW:	73.8 kDa
Concentration:	>0.05 µg/µL as determined by microplate BCA method
Purity:	> 80% as determined by SDS-PAGE and Coomassie blue staining
Buffer:	25 mM Tris-HCl, 100 mM glycine, pH 7.3, 10% glycerol
Preparation:	Recombinant protein was captured through anti-DDK affinity column followed by conventional chromatography steps.
Note:	For testing in cell culture applications, please filter before use. Note that you may experience some loss of protein during the filtration process.
Storage:	Store at -80°C.



[View online »](#)

<b>Stability:</b>	Stable for 12 months from the date of receipt of the product under proper storage and handling conditions. Avoid repeated freeze-thaw cycles.
<b>RefSeq:</b>	<a href="#">NP_060570</a>
<b>Locus ID:</b>	114327
<b>UniProt ID:</b>	<a href="#">Q5JVL4</a>
<b>RefSeq Size:</b>	5596
<b>Cytogenetics:</b>	6p12.2
<b>RefSeq ORF:</b>	1920
<b>Synonyms:</b>	dj304B14.2; EJM1; POC9; RIB72
<b>Summary:</b>	This gene encodes an EF-hand-containing calcium binding protein. The encoded protein likely plays a role in calcium homeostasis. Mutations in this gene have been associated with susceptibility to juvenile myoclonic epilepsy and juvenile absence epilepsy. Alternatively spliced transcript variants have been described. [provided by RefSeq, Feb 2010]

### Product images:



Coomassie blue staining of purified EFHC1 protein (Cat# [TP305830]). The protein was produced from HEK293T cells transfected with EFHC1 cDNA clone (Cat# [RC205830]) using MegaTran 2.0 (Cat# [TT210002]).