

Product datasheet for **TP305830**

EFHC1 (NM_018100) Human Recombinant Protein

Product data:

Product Type: Recombinant Proteins

Description: Recombinant protein of human EF-hand domain (C-terminal) containing 1 (EFHC1), 20 µg

Species: Human

Expression Host: HEK293T

Expression cDNA Clone or AA Sequence: >RC205830 protein sequence
Red=Cloning site **Green**=Tags(s)

MVSNPVHGLPFLPGTSFKDSTKTAFHRSQTLNRYNGYAVRRPTVGIGGDRQLQFNQLSQAELDELASKAP
VLTYGQPKQAPPADFIPAHVAFDCKVLKFDAYFQEDVPMSTEEQYRIRQVNIYYLLEDDSMSVIEPWEN
SGILQGKLIKRLAKNDRGDHYHWKDLNRGINITYGKTRVVDQDQFTQVFLESQGIELNPPEKMALD
PYTELKQPLRKYVTPSDFDQLKQFLTFDKQVLRFYAIWDDTDSMYGECRTYIIHYLMDDTVEIREVHE
RNDGIDPFLLMNRQRPVKLVENAKNFPQCVLEISDQEVLEWYAKDFIVGKSLTILGRTFFIYDCDPF
TRRYKKEKFGITDLPRIDVSKREPPPVKQELPPYNGFGLVEDSAQNCFALIPKAPKDKVIKMLVNDNKVL
RYLAVLESPIPEDKDRRFVFSYFLATDMISIFEPPVRNSGIIGGKYLGRTKVVKPYSTVDNPVYGPSPDF
FIGAVIEVFGHRFIILDTDEYVLKYMESNAAQYSPEALASIQNHVRKREAPAPEASKQTEKDPGVQELE
ALIDTIQKQLKDHCKDNIREAFQIYDKEASGYVDRDMFFKICESLNVPVDDSLVKELLRMC SHGEGKIN
YYNFVRAFSN

TRTRPLEQKLISEEDLAANDILDYKDDDDKV

Tag: C-Myc/DDK

Predicted MW: 73.8 kDa

Concentration: >0.05 µg/µL as determined by microplate BCA method

Purity: > 80% as determined by SDS-PAGE and Coomassie blue staining

Buffer: 25 mM Tris-HCl, 100 mM glycine, pH 7.3, 10% glycerol

Preparation: Recombinant protein was captured through anti-DDK affinity column followed by conventional chromatography steps.

Note: For testing in cell culture applications, please filter before use. Note that you may experience some loss of protein during the filtration process.

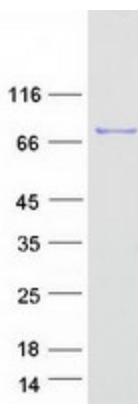
Storage: Store at -80°C.



[View online »](#)

Stability:	Stable for 12 months from the date of receipt of the product under proper storage and handling conditions. Avoid repeated freeze-thaw cycles.
RefSeq:	NP_060570
Locus ID:	114327
UniProt ID:	Q5JVL4
RefSeq Size:	5596
Cytogenetics:	6p12.2
RefSeq ORF:	1920
Synonyms:	dj304B14.2; EJM1; POC9; RIB72
Summary:	This gene encodes an EF-hand-containing calcium binding protein. The encoded protein likely plays a role in calcium homeostasis. Mutations in this gene have been associated with susceptibility to juvenile myoclonic epilepsy and juvenile absence epilepsy. Alternatively spliced transcript variants have been described. [provided by RefSeq, Feb 2010]

Product images:



Coomassie blue staining of purified EFHC1 protein (Cat# TP305830). The protein was produced from HEK293T cells transfected with EFHC1 cDNA clone (Cat# [RC205830]) using MegaTran 2.0 (Cat# [TT210002]).