

Product datasheet for TP305825M

ARHGEF14 (MCF2L) (NM_024979) Human Recombinant Protein

Product data:

Product Type:	Recombinant Proteins
Description:	Purified recombinant protein of Homo sapiens MCF.2 cell line derived transforming sequence-like (MCF2L), transcript variant 2, 100 µg
Species:	Human
Expression Host:	HEK293T
Expression cDNA Clone or AA Sequence:	>RC205825 protein sequence Red=Cloning site Green=Tags(s)

MTVRRLLSLCRDLWALWLLLKAGADEIMHQDIVPLCAADIQDQLKKRFAYLSGGRGQDGSPVITFPDYPA
FSEIPDKEFQNVMTYLTSLPSLQDAGIGFILVIDRRRDKWTSVKASVLRIAASFPANLQLVLVLRPTGFF
QRTLSDIAFKFNRDDFKMKVPVIMLSSVPDLHGIDKSQLTEDLGGTLDYCHSRWLCQRTAIESFALMVK
QTAQMLQSFGTELAETELPNDVQSTSSVLCATEKKDKAKEDLRLALKEGHSVLESRELAEGSEPSVN
QDQLDNQATVQRLLAQLNETEAAFDEFWAKHQKLEQCLQRHFQGFREVKAILDAASQKIATFTDIGN
SLAHVEHLLRDLASFEEKSGVAVERARALSDGEQLIGNKHYAVDSIRPKCQELRHLCDQFSAEIARRRG
LLSKSLELHRRLETSMKWCDEGIYLLASQPVDKCSQDGAEEALQIEKFLETGAENKIQLNAIYKEYE
SILNQDLMEHVRKVFQKQASMEEVFHRRQASLKKLAARQTRPVQPVAPRPEALAKSPCSPGIRRGSENS
SSEGGALRRGPYRRRAKSEMSESRQGRGSAGEEEESLAILRRHVMSELLDTERAYVEELLCVLEGYAAEMD
NPLMAHLLSTGLHNKDVLFNGMEEIYHFHNRIFLRELENYTDCPELVGRCFLERMEDFQIYKEYCQNKP
RSESLWRQCSDCPFFQECQRKLDHKLSDSYLLKPVQRITKYQLLLKEMLKYSRNCGEAEDLQEALSSIL
GILKAVNDSMHIAITGYDGNLGDGKLLMQGSFSVWTDHKKRGHTKVKELARFKPMQRHLFLHEKAVLFC
KKREENGEGYEKAPSYSYKQSLNMAAVGITENVKGDACKFEIWYNAREEVYIVQAPTPEIKAAWVNEIRK
VLTSQLQACREASQHRALEQSLSLPLPAPTSTSPSRGNSRNIKKLEERKTDPLSLEGYVSSAPLTKPPEK
GKEP

TRTRPLEQKLISEEDLAANDILDYKDDDDKV

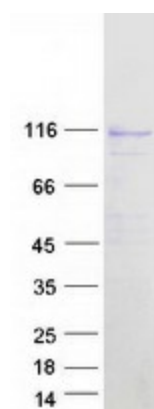
Tag:	C-Myc/DDK
Predicted MW:	126.6 kDa
Concentration:	>0.05 µg/µL as determined by microplate BCA method
Purity:	> 80% as determined by SDS-PAGE and Coomassie blue staining
Buffer:	25 mM Tris-HCl, 100 mM glycine, pH 7.3, 10% glycerol



[View online »](#)

Preparation:	Recombinant protein was captured through anti-DDK affinity column followed by conventional chromatography steps.
Note:	For testing in cell culture applications, please filter before use. Note that you may experience some loss of protein during the filtration process.
Storage:	Store at -80°C.
Stability:	Stable for 12 months from the date of receipt of the product under proper storage and handling conditions. Avoid repeated freeze-thaw cycles.
RefSeq:	NP_079255
Locus ID:	23263
UniProt ID:	O15068
RefSeq Size:	6456
Cytogenetics:	13q34
RefSeq ORF:	2955
Synonyms:	ARHGEF14; DBS; OST
Summary:	This gene encodes a guanine nucleotide exchange factor that interacts specifically with the GTP-bound Rac1 and plays a role in the Rho/Rac signaling pathways. A variant in this gene was associated with osteoarthritis. Alternative splicing results in multiple transcript variants. [provided by RefSeq, Mar 2016]

Product images:



Coomassie blue staining of purified MCF2L protein (Cat# [TP305825]). The protein was produced from HEK293T cells transfected with MCF2L cDNA clone (Cat# [RC205825]) using MegaTran 2.0 (Cat# [TT210002]).