

## Product datasheet for TP305817L

### TUG (ASPCR1) (NM\_024083) Human Recombinant Protein

#### Product data:

Product Type:	Recombinant Proteins
Description:	Recombinant protein of human alveolar soft part sarcoma chromosome region, candidate 1 (ASPCR1), 1 mg
Species:	Human
Expression Host:	HEK293T
Expression cDNA Clone or AA Sequence:	>RC205817 protein sequence <b>Red</b> =Cloning site <b>Green</b> =Tags(s)

MAAPAGGGGSAVSVLAPNGRRHTVKVTPSTVLLQVLEDTCRRQDFNPCEYDLKFQRSVLDLSLQWRFANL  
PNNAKLEMVPASRSREGPENMVRIALQLDDGSRLQDSFCGQTLWELLSHFQIRECLQHPGGATPVCVY  
TRDEVTGEAALRGTTLQSLGLTGGSATIRFVMKCYDPVGKTPGSLGSSASAGQAAASAPLPLESGELSRG  
DLSRPEDADTSGPCCEHTQEKQSTRAPAAAPFVPFSGGGQRQGGPPGPTPLTSSSAKLPKSLSSPGGSPS  
KPKKSKSGQDPQQEQEQERERDPQQEQERERPVDREPVDREPVVCHPDLEERLQAWPAELPDEFFELTVD  
DVRRLAQLKSERKRL EEAPLVTKAFREAQIKEKLERYPKVALRVLPDRYVLQGGFRPSETVGDLRDFV  
RSHLGNPELSFYLFITPPKTVLDDHTQTLFQANLFPAALVHLGAEPPAGVYLEPGLLEHAISPSAADVLV  
ARYMSRAAGSPSPLPAPDPAPKSEPAEEGALVPPEPIPGTAQPVKRSLGKVPKWLKLPASKR

**TRTRPLEQKLISEEDLAANDILDYKDDDDKV**

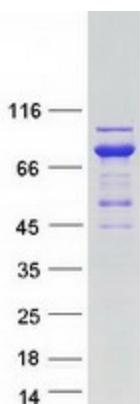
Tag:	C-Myc/DDK
Predicted MW:	60 kDa
Concentration:	>0.05 µg/µL as determined by microplate BCA method
Purity:	> 80% as determined by SDS-PAGE and Coomassie blue staining
Buffer:	25 mM Tris-HCl, 100 mM glycine, pH 7.3, 10% glycerol
Preparation:	Recombinant protein was captured through anti-DDK affinity column followed by conventional chromatography steps.
Note:	For testing in cell culture applications, please filter before use. Note that you may experience some loss of protein during the filtration process.
Storage:	Store at -80°C.



[View online »](#)

<b>Stability:</b>	Stable for 12 months from the date of receipt of the product under proper storage and handling conditions. Avoid repeated freeze-thaw cycles.
<b>RefSeq:</b>	<a href="#">NP_076988</a>
<b>Locus ID:</b>	79058
<b>UniProt ID:</b>	<a href="#">Q9BZE9</a>
<b>RefSeq Size:</b>	1858
<b>Cytogenetics:</b>	17q25.3
<b>RefSeq ORF:</b>	1659
<b>Synonyms:</b>	ASPCR1; ASPL; ASPS; RCC17; TUG; UBXD9; UBXN9
<b>Summary:</b>	The protein encoded by this gene contains a UBX domain and interacts with glucose transporter type 4 (GLUT4). This protein is a tether, which sequesters the GLUT4 in intracellular vesicles in muscle and fat cells in the absence of insulin, and redistributes the GLUT4 to the plasma membrane within minutes of insulin stimulation. Translocation t(X;17) (p11;q25) of this gene with transcription factor TFE3 gene results in a ASPSCR1-TFE3 fusion protein in alveolar soft part sarcoma and in renal cell carcinomas. Multiple alternatively spliced transcript variants have been found. [provided by RefSeq, Oct 2011]

### Product images:



Coomassie blue staining of purified ASPSCR1 protein (Cat# [TP305817]). The protein was produced from HEK293T cells transfected with ASPSCR1 cDNA clone (Cat# [RC205817]) using MegaTran 2.0 (Cat# [TT210002]).