

Product datasheet for **TP305814L**

TEDC2 (NM_025108) Human Recombinant Protein

Product data:

Product Type: Recombinant Proteins
Description: Recombinant protein of human chromosome 16 open reading frame 59 (C16orf59), 1 mg
Species: Human
Expression Host: HEK293T
Expression cDNA Clone or AA Sequence: >RC205814 protein sequence
Red=Cloning site **Green**=Tags(s)

MLPAGCSRRLVAELQGALDACAQRQLQLEQSLRVCRRLLHAWPTGTRALKPPPGPETNGEDPLPACTPS
PQDLKELEFLTQALEKAVRVRGITKAGERDKAPSLKRSRIVTSSGTTASAPPHSPGQAGGHASDTRPTK
GLRQTTVPAKGHPERRLLSVGDGTRVGMGARTPRPGAGLRDQQMAPSAAPQAPEAFTLKEKGHLLRLPA
A
FRKAASQNSSLWAQLSSTQTSDDSTDAAAAKTQFLQNMQTASGGPQPRLSAVEVEAEAGRLRKACSLRLR
MREELSAAPMDWMQEYRCLLTLEGLQAMVGQCLHRLQELRAAVAEQPPRCPVGRPPGASPSCGGRAE
PA
WSPQLLVYSSTQELQTLAALKLRVAVLDQQIHLEKVLMAELLPLVSAAQPQGPWLALCRAVHSLICEGG
ARVLTILRDEPAV

TRTRPLEQKLISEEDLAANDILDYKDDDDKV

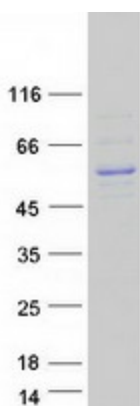
Tag: C-Myc/DDK
Predicted MW: 46.2 kDa
Concentration: >0.05 µg/µL as determined by microplate BCA method
Purity: > 80% as determined by SDS-PAGE and Coomassie blue staining
Buffer: 25 mM Tris-HCl, 100 mM glycine, pH 7.3, 10% glycerol
Preparation: Recombinant protein was captured through anti-DDK affinity column followed by conventional chromatography steps.
Note: For testing in cell culture applications, please filter before use. Note that you may experience some loss of protein during the filtration process.
Storage: Store at -80°C.



[View online »](#)

Stability:	Stable for 12 months from the date of receipt of the product under proper storage and handling conditions. Avoid repeated freeze-thaw cycles.
RefSeq:	NP_079384
Locus ID:	80178
UniProt ID:	Q7L2K0
RefSeq Size:	1650
Cytogenetics:	16p13.3
RefSeq ORF:	1299
Synonyms:	C16orf59
Summary:	Acts as a positive regulator of ciliary hedgehog signaling. Required for centriole stability. [UniProtKB/Swiss-Prot Function]

Product images:



Coomassie blue staining of purified TEDC2 protein (Cat# [TP305814]). The protein was produced from HEK293T cells transfected with TEDC2 cDNA clone (Cat# [RC205814]) using MegaTran 2.0 (Cat# [TT210002]).