

Product datasheet for **TP305813M**

C9orf86 (RABL6) (NM_024718) Human Recombinant Protein

Product data:

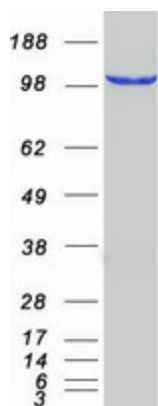
Product Type:	Recombinant Proteins
Description:	Recombinant protein of human chromosome 9 open reading frame 86 (C9orf86), 100 µg
Species:	Human
Expression Host:	HEK293T
Expression cDNA Clone or AA Sequence:	>RC205813 protein sequence Red =Cloning site Green =Tags(s)
	<p>MKIVIRGDRNTGKTALWHRLQGRPFVEEYIPTQEIQVTSIHWSYKTTDDIVKVEVWDWVDKGKCKKRGDG LKMENDPQEAESMALDAEFLDVYKNCNGVMMFDITKQWTFNYILRELKVPVTHVPVCVLGNRYRDMG EH</p> <p>RVILPDDVDRDFIDNLD RPPGSSYFRYAESSMKNSFGLKYLHKFFNIPFLQLQRETLLRQLETNQLDMDAT LEELSVQQETEDQNYGIFLEMMEARSRGHASPLAANGQSPSPGSQSPVVPAGAVSTGSSSPGTPQPAPQL PLNAAPPSSVPPVPPSEALPPPACPSAPAPRRSISRLFGTSPATEAAPPPPEPVPAAEGPATVQSVEDF VPDDRLDRSFLEDTTPARDEKKVGAKAAQQSDSDGEALGGNPMVAGFQDDVDLEDQPRGSPPLPAGP VP</p> <p>SQDITLSSEEEAEVAAPT KGPAPAPQQCSEPETKWSSIPASKPRRGTA PTRTAAPPWPGGVSVRTGPEKR SSTRPPAEMEPGKGEQASSSES DPEGIAA QMLSFVMDDPDFESEGSDTQRRADDFPVRDDPSDVTDEDE GPAEPPPPKLLP AFR LKNDSDLFGLGLEEAGPKESSEEGKEGKTPSKEKKKKKKKKGKEEEEKAAKKKS KHKKSKDKEEGKEERRRRQRP RSRRTAADELEAFLGGGAPGGRHPGGGDYEEEL</p> <p>TRTRPLEQKLISEEDLAANDILDYKDDDDKV</p>
Tag:	C-Myc/DDK
Predicted MW:	74.7 kDa
Concentration:	>0.05 µg/µL as determined by microplate BCA method
Purity:	> 80% as determined by SDS-PAGE and Coomassie blue staining
Buffer:	25 mM Tris-HCl, 100 mM glycine, pH 7.3, 10% glycerol
Preparation:	Recombinant protein was captured through anti-DDK affinity column followed by conventional chromatography steps.
Note:	For testing in cell culture applications, please filter before use. Note that you may experience some loss of protein during the filtration process.



[View online »](#)

Storage:	Store at -80°C.
Stability:	Stable for 12 months from the date of receipt of the product under proper storage and handling conditions. Avoid repeated freeze-thaw cycles.
RefSeq:	<u>NP_078994</u>
Locus ID:	55684
UniProt ID:	<u>Q3YEC7</u>
RefSeq Size:	3148
Cytogenetics:	9q34.3
RefSeq ORF:	2058
Synonyms:	C9orf86; PARF; pp8875; RBEL1
Summary:	This gene encodes a member of the Ras superfamily of small GTPases. The encoded protein binds to both GTP and GDP and may play a role in cell growth and survival. Overexpression of this gene may play a role in breast cancer tumorigenesis, and pseudogenes of this gene are located on the long arm of chromosome 2 and the short arm of chromosome 18. Alternatively spliced transcript variants encoding multiple isoforms have been observed for this gene. [provided by RefSeq, Dec 2011]

Product images:



Coomassie blue staining of purified RABL6 protein (Cat# [TP305813]). The protein was produced from HEK293T cells transfected with RABL6 cDNA clone (Cat# [RC205813]) using MegaTran 2.0 (Cat# [TT210002]).