

## Product datasheet for **TP305799L**

### PPP1R14A (NM\_033256) Human Recombinant Protein

#### Product data:

|                                       |   |
|---------------------------------------|---|
| Product Type:                         | Recombinant Proteins  |
| Description:                          | Recombinant protein of human protein phosphatase 1, regulatory (inhibitor) subunit 14A (PPP1R14A), 1 mg   |
| Species:                              | Human   |
| Expression Host:                      | HEK293T   |
| Expression cDNA Clone or AA Sequence: | >RC205799 protein sequence<br><b>Red</b> =Cloning site <b>Green</b> =Tags(s)  |
|                                       | <br>MAAQRLGKRVLSKLVQSPSRARGPGGSPGGLQKRHARVTVKYDRRELQRRLDVEKWIDGRLEELYRGMEAD<br>MPDEINIDELLESEEEERSRKIQGLLKSCGKPVEDFIQELLAKLQGLHRQPGLRQPSPSHDGSLSPLQD<br>RARTAHP<br><br><b>TRTRPLEQKLISEEDLAANDILDYKDDDDKV</b> |
| Tag:                                  | C-Myc/DDK   |
| Predicted MW:                         | 16.5 kDa  |
| Concentration:                        | >0.05 µg/µL as determined by microplate BCA method  |
| Purity:                               | > 80% as determined by SDS-PAGE and Coomassie blue staining   |
| Buffer:                               | 25 mM Tris-HCl, 100 mM glycine, pH 7.3, 10% glycerol  |
| Preparation:                          | Recombinant protein was captured through anti-DDK affinity column followed by conventional chromatography steps.  |
| Note:                                 | For testing in cell culture applications, please filter before use. Note that you may experience some loss of protein during the filtration process.  |
| Storage:                              | Store at -80°C.   |
| Stability:                            | Stable for 12 months from the date of receipt of the product under proper storage and handling conditions. Avoid repeated freeze-thaw cycles.   |
| RefSeq:                               | <a href="#">NP_150281</a>   |
| Locus ID:                             | 94274   |
| UniProt ID:                           | <a href="#">Q96A00</a>  |



[View online »](#)

RefSeq Size: 782

Cytogenetics: 19q13.2

RefSeq ORF: 441

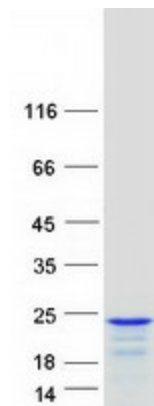
Synonyms: CPI-17; CPI17; PPP1INL

**Summary:** The protein encoded by this gene belongs to the protein phosphatase 1 (PP1) inhibitor family. This protein is an inhibitor of smooth muscle myosin phosphatase, and has higher inhibitory activity when phosphorylated. Inhibition of myosin phosphatase leads to increased myosin phosphorylation and enhanced smooth muscle contraction. Alternatively spliced transcript variants encoding different isoforms have been noted for this gene. [provided by RefSeq, Sep 2011]

**Protein Families:** Druggable Genome

**Protein Pathways:** Vascular smooth muscle contraction

### Product images:



Coomassie blue staining of purified PPP1R14A protein (Cat# [TP305799]). The protein was produced from HEK293T cells transfected with PPP1R14A cDNA clone (Cat# [RC205799]) using MegaTran 2.0 (Cat# [TT210002]).