

Product datasheet for **TP305799**

PPP1R14A (NM_033256) Human Recombinant Protein

Product data:

Product Type:	Recombinant Proteins
Description:	Recombinant protein of human protein phosphatase 1, regulatory (inhibitor) subunit 14A (PPP1R14A), 20 µg
Species:	Human
Expression Host:	HEK293T
Expression cDNA Clone or AA Sequence:	>RC205799 protein sequence Red =Cloning site Green =Tags(s)
	 MAAQRLGKRVLKLSKLSQSPSRARGPGGSPGGLQKRHARVTVKYDRRELQRRLDVEKWIDGRLEELYRGMEAD MPDEINIDELLESEEEERSRKIQGLLKSCGKPVEDFIQELLAKLQGLHRQPGLRQPSPSHDGSLSPLQD RARTAHP TRTRPLEQKLISEEDLAANDILDYKDDDDKV
Tag:	C-Myc/DDK
Predicted MW:	16.5 kDa
Concentration:	>0.05 µg/µL as determined by microplate BCA method
Purity:	> 80% as determined by SDS-PAGE and Coomassie blue staining
Buffer:	25 mM Tris-HCl, 100 mM glycine, pH 7.3, 10% glycerol
Preparation:	Recombinant protein was captured through anti-DDK affinity column followed by conventional chromatography steps.
Note:	For testing in cell culture applications, please filter before use. Note that you may experience some loss of protein during the filtration process.
Storage:	Store at -80°C.
Stability:	Stable for 12 months from the date of receipt of the product under proper storage and handling conditions. Avoid repeated freeze-thaw cycles.
RefSeq:	NP_150281
Locus ID:	94274
UniProt ID:	Q96A00



[View online »](#)

RefSeq Size: 782

Cytogenetics: 19q13.2

RefSeq ORF: 441

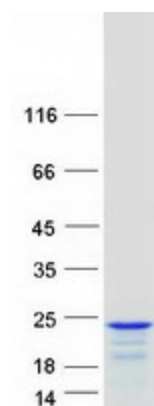
Synonyms: CPI-17; CPI17; PPP1INL

Summary: The protein encoded by this gene belongs to the protein phosphatase 1 (PP1) inhibitor family. This protein is an inhibitor of smooth muscle myosin phosphatase, and has higher inhibitory activity when phosphorylated. Inhibition of myosin phosphatase leads to increased myosin phosphorylation and enhanced smooth muscle contraction. Alternatively spliced transcript variants encoding different isoforms have been noted for this gene. [provided by RefSeq, Sep 2011]

Protein Families: Druggable Genome

Protein Pathways: Vascular smooth muscle contraction

Product images:



Coomassie blue staining of purified PPP1R14A protein (Cat# TP305799). The protein was produced from HEK293T cells transfected with PPP1R14A cDNA clone (Cat# [RC205799]) using MegaTran 2.0 (Cat# [TT210002]).