

## Product datasheet for **TP305797**

### **PLTP (NM\_006227) Human Recombinant Protein**

#### **Product data:**

<b>Product Type:</b>	Recombinant Proteins
<b>Description:</b>	Recombinant protein of human phospholipid transfer protein (PLTP), transcript variant 1, 20 µg
<b>Species:</b>	Human
<b>Expression Host:</b>	HEK293T
<b>Expression cDNA Clone or AA Sequence:</b>	>RC205797 protein sequence <b>Red</b> =Cloning site <b>Green</b> =Tags(s)

MALFGALFLALLAGAHAVFPGCKIRVTSKALELVKQEGLRFLEQELETITIPDLRGKEGHFYINISEVKV  
TELQLTSSSELDLFPQQELMLQITNASLGLRFRRLLYWFFYDGGYINASAEGVSIRTGLELSRDPAGRMK  
VSNVSCQASVSRMHAAFGGTFKKVYDFLSTFITSGMRFLNQQICPVLYHAGTVLLNSLLDTPVVRSSVD  
ELVGIDYSLMKDPVASTSNLDMDFRGAFFPLTERNWSLPNRAVEPQLQEEERMVYVAFSEFFFDAMESY  
FRAGALQLLLVGDKVPDMLLRATYFGSIVLLSPAVIDSPLKLELRVLAPPRTIKPSGTTISVTASV  
TIALVPPDQPEVQLSSMTMDARLSAKMALRGKALRTQLDLRRFRIYSNHSALSLALIPLQAPLKTMLQI  
GVMPMLNERTWRGVQIPLPEGINFVHEWVTNHAGFLTIGADLHFAKGLREVIEKNRPADVRASTAPTST  
AAV

**TRTRPLEQKLISEEDLAANDILDYKDDDDKV**

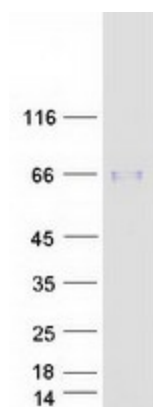
<b>Tag:</b>	C-Myc/DDK
<b>Predicted MW:</b>	53 kDa
<b>Concentration:</b>	>0.05 µg/µL as determined by microplate BCA method
<b>Purity:</b>	> 80% as determined by SDS-PAGE and Coomassie blue staining
<b>Buffer:</b>	25 mM Tris-HCl, 100 mM glycine, pH 7.3, 10% glycerol
<b>Preparation:</b>	Recombinant protein was captured through anti-DDK affinity column followed by conventional chromatography steps.
<b>Note:</b>	For testing in cell culture applications, please filter before use. Note that you may experience some loss of protein during the filtration process.
<b>Storage:</b>	Store at -80°C.



[View online »](#)

<b>Stability:</b>	Stable for 12 months from the date of receipt of the product under proper storage and handling conditions. Avoid repeated freeze-thaw cycles.
<b>RefSeq:</b>	<a href="#">NP_006218</a>
<b>Locus ID:</b>	5360
<b>UniProt ID:</b>	<a href="#">P55058</a>
<b>RefSeq Size:</b>	2100
<b>Cytogenetics:</b>	20q13.12
<b>RefSeq ORF:</b>	1479
<b>Synonyms:</b>	BPIFE; HDLCQ9
<b>Summary:</b>	The protein encoded by this gene is one of at least two lipid transfer proteins found in human plasma. The encoded protein transfers phospholipids from triglyceride-rich lipoproteins to high density lipoprotein (HDL). In addition to regulating the size of HDL particles, this protein may be involved in cholesterol metabolism. At least two transcript variants encoding different isoforms have been found for this gene. [provided by RefSeq, Jul 2008]
<b>Protein Families:</b>	Druggable Genome, Secreted Protein
<b>Protein Pathways:</b>	PPAR signaling pathway

### Product images:



Coomassie blue staining of purified PLTP protein (Cat# TP305797). The protein was produced from HEK293T cells transfected with PLTP cDNA clone (Cat# [RC205797]) using MegaTran 2.0 (Cat# [TT210002]).