

## Product datasheet for TP305776L

### KLHDC4 (NM\_017566) Human Recombinant Protein

#### Product data:

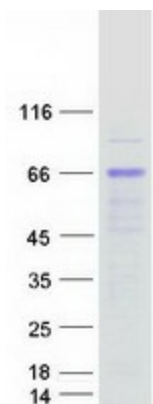
Product Type:	Recombinant Proteins
Description:	Recombinant protein of human kelch domain containing 4 (KLHDC4), 1 mg
Species:	Human
Expression Host:	HEK293T
Expression cDNA Clone or AA Sequence:	>RC205776 protein sequence Red=Cloning site Green=Tags(s)
	<p>MGKKGKKEKKGRGAEKTAAKMEKKVSKRSRKEEEDLEALIAHFQTLDAKRTQTVELPCPPSPRLNASLS  VHPEKDELILFGGEYFNGQKTFLYNELYVYNTRKDTWTKVDIPSPPPRCAHQAVVWPQGGGQLWVFGGE  FASPNGEQFYHYKDLWVLHLATKTWEQVKSTGGPSGRSGHRMVAWKRQLILFGGFHESTRDIYYNDVYA  FNLDFTWSKLSPSGTGPTPRSGCQMSVTPQGGIVVYGGYSKQRVKKDVKGTRHSDMFLKPEDGREDK  WWTRMNPSPGVKPTPRSGFSVAMAPNHQTLFFGGVCDEEEESLSGFEFFNDLYFYDATRNRWFEGQLKGP  KSEKKRRRGRKEEPEGGRPACGGAGTQGPVQLVKEVVAEDGTWVTIKQVLTAPGSAGQPRSEDEDSLE  EAGSPAPGPCPRSNAMLAVKHGVLVYVYGGMFAGDRQVTLSDLHCLDLHRMEAWKALVEMDPETQEWLEE  TDSEEDSEEVEGAEGGVDDDEDSGEESGAED</p> <p>TRTRPLEQKLISEEDLAANDILDYKDDDDKV</p>
Tag:	C-Myc/DDK
Predicted MW:	57.7 kDa
Concentration:	>0.05 µg/µL as determined by microplate BCA method
Purity:	> 80% as determined by SDS-PAGE and Coomassie blue staining
Buffer:	25 mM Tris-HCl, 100 mM glycine, pH 7.3, 10% glycerol
Preparation:	Recombinant protein was captured through anti-DDK affinity column followed by conventional chromatography steps.
Note:	For testing in cell culture applications, please filter before use. Note that you may experience some loss of protein during the filtration process.
Storage:	Store at -80°C.
Stability:	Stable for 12 months from the date of receipt of the product under proper storage and handling conditions. Avoid repeated freeze-thaw cycles.



[View online »](#)

RefSeq: [NP\\_060036](#)  
Locus ID: 54758  
UniProt ID: [Q8TBB5](#)  
RefSeq Size: 1944  
Cytogenetics: 16q24.2  
RefSeq ORF: 1560

### Product images:



Coomassie blue staining of purified KLHDC4 protein (Cat# [TP305776]). The protein was produced from HEK293T cells transfected with KLHDC4 cDNA clone (Cat# [RC205776]) using MegaTran 2.0 (Cat# [TT210002]).