

Product datasheet for **TP305776**

KLHDC4 (NM_017566) Human Recombinant Protein

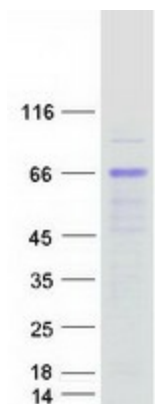
Product data:

Product Type:	Recombinant Proteins
Description:	Recombinant protein of human kelch domain containing 4 (KLHDC4), 20 µg
Species:	Human
Expression Host:	HEK293T
Expression cDNA Clone or AA Sequence:	>RC205776 protein sequence Red =Cloning site Green =Tags(s)
	<p>MGKKGKKEKKGRGAEKTAAKMEKKVSKRSRKEEEDLEALIAHFQTLDAKRTQTVELPCPPSPRLNASLS VHPEKDELILFGGEYFNGQKTFLYNELYVYNTRKDTWTKVDIPSPPPRCAHQAVVWPQGGGQLWVFGGE FASPNGEQFYHYKDLWVLHLATKTWEQVKSTGGPSGRSGHRMVAWKRQLILFGGFHESTRDIYYNDVYA FNLDFTWSKLSPSGTGPTPRSGCQMSVTPQGGIVVYGGYSKQRVKKDVKGTRHSDMFLKPEDGREDK WWTRMNPSPGVKPTPRSGFSVAMAPNHQTLFFGGVCDEEEESLSGFEFFNDLYFYDATRNRWFEGQLKGP KSEKKRRRGRKEEPEGGRPACGGAGTQGPVQLVKEVVAEDGTWVTIKQVLTAPGSAGQPRSEDEDSLE EAGSPAPGPCPRSNAMLAVKHGVLVYVYGGMFAGDRQVTLSDLHCLDLHRMEAWKALVEMDPETQEWLEE TDSEEDSEEVEGAEGGVDDDEDSGEESGAED</p> <p>TRTRPLEQKLISEEDLAANDILDYKDDDDKV</p>
Tag:	C-Myc/DDK
Predicted MW:	57.7 kDa
Concentration:	>0.05 µg/µL as determined by microplate BCA method
Purity:	> 80% as determined by SDS-PAGE and Coomassie blue staining
Buffer:	25 mM Tris-HCl, 100 mM glycine, pH 7.3, 10% glycerol
Preparation:	Recombinant protein was captured through anti-DDK affinity column followed by conventional chromatography steps.
Note:	For testing in cell culture applications, please filter before use. Note that you may experience some loss of protein during the filtration process.
Storage:	Store at -80°C.
Stability:	Stable for 12 months from the date of receipt of the product under proper storage and handling conditions. Avoid repeated freeze-thaw cycles.



[View online >](#)

RefSeq:	<u>NP_060036</u>
Locus ID:	54758
UniProt ID:	<u>Q8TBB5</u>
RefSeq Size:	1944
Cytogenetics:	16q24.2
RefSeq ORF:	1560

Product images:

Coomassie blue staining of purified KLHDC4 protein (Cat# TP305776). The protein was produced from HEK293T cells transfected with KLHDC4 cDNA clone (Cat# [RC205776]) using MegaTran 2.0 (Cat# [TT210002]).