

Product datasheet for TP305770L

DEPTOR (NM_022783) Human Recombinant Protein

Product data:

Product Type:	Recombinant Proteins
Description:	Recombinant protein of human DEP domain containing 6 (DEPDC6), 1 mg
Species:	Human
Expression Host:	HEK293T
Expression cDNA Clone or AA Sequence:	>RC205770 protein sequence Red =Cloning site Green =Tags(s)

MEEGGSTGSAGSDSSTSGSGGAQQRELERMAEVLVTGEQLRLRLHEEKVIKDRRHHLKTYPNCFVAKELI
DWLIEHKEASDRETAIKLMQKLADRGIIHHVCDEHKEFKDVKLFYFRKDDGTFPLDNEVKAFMRGQRLY
EKLMSPELLLQPREEEGVKYERTFMASEFLDWLVQEGEATTRKEAEQLCHRLMEHGIIQHVSCKHPFVD
SNLLYQFRMNFRRRRRLMELLNEKSPSSQETHDSPFCLRKQSHDNRKSTSFMSVSPSKEIKIVSAVRRSS
MSSCGSSGYFSSSPTLSSSPPVLCNPKSVLKRPTSEELLTPGAPYARKTFTIVGDAVGGVFWRGSKPC
HIQAVDPSGPAAGMKVCQFVSVNGLNVLHVDYRTVSNLILTPRTIVMEVMEELEC

TRTRPLEQKLISEEDLAANDILDYKDDDDKV

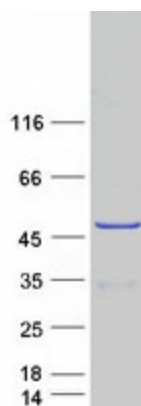
Tag:	C-Myc/DDK
Predicted MW:	46.1 kDa
Concentration:	>0.05 µg/µL as determined by microplate BCA method
Purity:	> 80% as determined by SDS-PAGE and Coomassie blue staining
Buffer:	25 mM Tris-HCl, 100 mM glycine, pH 7.3, 10% glycerol
Preparation:	Recombinant protein was captured through anti-DDK affinity column followed by conventional chromatography steps.
Note:	For testing in cell culture applications, please filter before use. Note that you may experience some loss of protein during the filtration process.
Storage:	Store at -80°C.
Stability:	Stable for 12 months from the date of receipt of the product under proper storage and handling conditions. Avoid repeated freeze-thaw cycles.
RefSeq:	<u>NP_073620</u>
Locus ID:	64798



[View online »](#)

UniProt ID:	Q8TB45
RefSeq Size:	2636
Cytogenetics:	8q24.12
RefSeq ORF:	1227
Synonyms:	DEP.6; DEPDC6
Summary:	Negative regulator of the mTORC1 and mTORC2 signaling pathways. Inhibits the kinase activity of both complexes.[UniProtKB/Swiss-Prot Function]

Product images:



Coomassie blue staining of purified DEPTOR protein (Cat# [TP305770]). The protein was produced from HEK293T cells transfected with DEPTOR cDNA clone (Cat# [RC205770]) using MegaTran 2.0 (Cat# [TT210002]).