

Product datasheet for TP305760L

CYP1A1 (NM_000499) Human Recombinant Protein

Product data:

Product Type:	Recombinant Proteins
Description:	Recombinant protein of human cytochrome P450, family 1, subfamily A, polypeptide 1 (CYP1A1), 1 mg
Species:	Human
Expression Host:	HEK293T
Expression cDNA Clone or AA Sequence:	>RC205760 protein sequence Red =Cloning site Green =Tags(s)

MLFPISMSATEFLLASVIFCLVFWVIRASRPQVPKGLKNPPGPWGWPLIGHMLTLGKNPHLALSRRMSQQY
GDVLQIRIGSTPVVLSGLDTRQALVLRQGDDFKGRPDLYTFTLISNGQSMSFSPDSGPVWAARRRLAQN
GLKSFSIASDPASSTSCYLEEHVSKEAEVLISLQELMAGPGHFNPHYRYVWVSVTNVICAICFGRRYDHN
HQELLSLVNLNNNFGEVVGSGNPADFIPIRLYLPNPSLNAFKDLNEKFYSFMQKMKVKEHYKTFEKGHIRD
ITDSLIEHCQEKQLDENANVQLSDEKIINIVLDLFGAGFDVTTAISWSLMYLVMMNPRVQRKIQEELDTV
IGRSRRPRLSDRSHLPYMEAFILETFRHSSFPFTIPHSTTRDTSKGFYIPKGRCVFVNQWQINHDQKL
WVNPSEFLPERFLTPDGAIDKVLSEKVIIFGMGKRKICGETIARWEVFLFLAILLQRVEFSVPLGVKVD
MPIYGLTMKHACCEHFQMLRS

TRTRPLEQKLISEEDLAANDILDYKDDDDKV

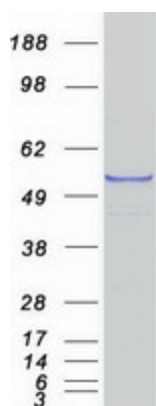
Tag:	C-Myc/DDK
Predicted MW:	58 kDa
Concentration:	>0.05 µg/µL as determined by microplate BCA method
Purity:	> 80% as determined by SDS-PAGE and Coomassie blue staining
Buffer:	25 mM Tris-HCl, 100 mM glycine, pH 7.3, 10% glycerol
Preparation:	Recombinant protein was captured through anti-DDK affinity column followed by conventional chromatography steps.
Note:	For testing in cell culture applications, please filter before use. Note that you may experience some loss of protein during the filtration process.
Storage:	Store at -80°C.



[View online »](#)

Stability:	Stable for 12 months from the date of receipt of the product under proper storage and handling conditions. Avoid repeated freeze-thaw cycles.
RefSeq:	NP_000490
Locus ID:	1543
UniProt ID:	P04798 , A0N0X8
RefSeq Size:	2608
Cytogenetics:	15q24.1
RefSeq ORF:	1536
Synonyms:	AHH; AHRR; CP11; CYP1; CYP1A1; P1-450; P450-C; P450DX
Summary:	This gene, CYP1A1, encodes a member of the cytochrome P450 superfamily of enzymes. The cytochrome P450 proteins are monooxygenases which catalyze many reactions involved in drug metabolism and synthesis of cholesterol, steroids and other lipids. This protein localizes to the endoplasmic reticulum and its expression is induced by some polycyclic aromatic hydrocarbons (PAHs), some of which are found in cigarette smoke. The enzyme's endogenous substrate is unknown; however, it is able to metabolize some PAHs to carcinogenic intermediates. The gene has been associated with lung cancer risk. A related family member, CYP1A2, is located approximately 25 kb away from CYP1A1 on chromosome 15. Alternative splicing results in multiple transcript variants encoding distinct isoforms. [provided by RefSeq, Jan 2016]
Protein Families:	Druggable Genome, P450, Transmembrane
Protein Pathways:	Metabolism of xenobiotics by cytochrome P450, Retinol metabolism, Tryptophan metabolism

Product images:



Coomassie blue staining of purified CYP1A1 protein (Cat# [TP305760]). The protein was produced from HEK293T cells transfected with CYP1A1 cDNA clone (Cat# [RC205760]) using MegaTran 2.0 (Cat# [TT210002]).