

## Product datasheet for **TP305750M**

### ST3GAL6 (NM\_006100) Human Recombinant Protein

#### Product data:

Product Type:	Recombinant Proteins
Description:	Recombinant protein of human ST3 beta-galactoside alpha-2,3-sialyltransferase 6 (ST3GAL6), 100 µg
Species:	Human
Expression Host:	HEK293T
Expression cDNA Clone or AA Sequence:	>RC205750 protein sequence <b>Red</b> =Cloning site <b>Green</b> =Tags(s)

MRGYLVAIFLSAVFLYYVLHCILWGTNVYVWVAPVEMKRRNKIQPCLSKPAFASLLRFHQFHPFLCAADFR  
KIASLYGSDKFDLPYGMRTSAEYFRLALS KLQSCDLDFEDFNIPCKKCVVVGNGGVLKNKTLGEEKIDSYD  
VIIRMNNGPVLGHEEEVGRRTTFRLFYPESVFSDDPIHNDPNTTVILTAFKPHDLRWLLELLMGDKINTNG  
FWKKPALNLIYKPYQIRILDPIIRTAAYELLHFPKVFQPKHPTTGIIAITLAFYICHEVHLAGFK  
YNFSDLKSPLHYGNATMSLMNKNAYHNVTAEQFLFKDIIKLNLVINLTQD

**SGP**TRTRPLE**QKLISEEDLAANDILDYKDDDDK**V

Tag:	C-Myc/DDK
Predicted MW:	38 kDa
Concentration:	>0.05 µg/µL as determined by microplate BCA method
Purity:	> 80% as determined by SDS-PAGE and Coomassie blue staining
Buffer:	25 mM Tris-HCl, 100 mM glycine, pH 7.3, 10% glycerol
Preparation:	Recombinant protein was captured through anti-DDK affinity column followed by conventional chromatography steps.
Note:	For testing in cell culture applications, please filter before use. Note that you may experience some loss of protein during the filtration process.
Storage:	Store at -80°C.
Stability:	Stable for 12 months from the date of receipt of the product under proper storage and handling conditions. Avoid repeated freeze-thaw cycles.
RefSeq:	<a href="#">NP_006091</a>
Locus ID:	10402



[View online »](#)

UniProt ID: [Q9Y274](#)

RefSeq Size: 3571

Cytogenetics: 3q12.1

RefSeq ORF: 993

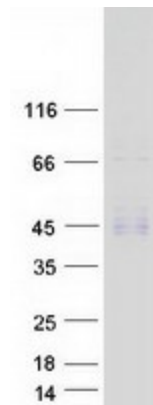
Synonyms: SIAT10; ST3GALVI

**Summary:** The protein encoded by this gene is a member of the sialyltransferase family. Members of this family are enzymes that transfer sialic acid from the activated cytidine 5'-monophospho-N-acetylneuraminic acid to terminal positions on sialylated glycolipids (gangliosides) or to the N- or O-linked sugar chains of glycoproteins. This protein has high specificity for neolactotetraosylceramide and neolactohexaosylceramide as glycolipid substrates and may contribute to the formation of selectin ligands and sialyl Lewis X, a carbohydrate important for cell-to-cell recognition and a blood group antigen. [provided by RefSeq, Apr 2016]

**Protein Families:** Transmembrane

**Protein Pathways:** Glycosphingolipid biosynthesis - lacto and neolacto series, Metabolic pathways

### Product images:



Coomassie blue staining of purified ST3GAL6 protein (Cat# [TP305750]). The protein was produced from HEK293T cells transfected with ST3GAL6 cDNA clone (Cat# [RC205750]) using MegaTran 2.0 (Cat# [TT210002]).