

Product datasheet for **TP305748**

CUTC (NM_015960) Human Recombinant Protein

Product data:

Product Type:	Recombinant Proteins
Description:	Recombinant protein of human cutC copper transporter homolog (E. coli) (CUTC), 20 µg
Species:	Human
Expression Host:	HEK293T
Expression cDNA Clone or AA Sequence:	>RC205748 protein sequence Red =Cloning site Green =Tags(s)
	 MKRQGASSERKRARIPSGKAGAANGFLMEVCVDSVESAVNAERGGADRIELCSGLSEGGTTPSMGVLQVV KQSVQIPVFMIRPRGGDFLYSDREIEVMKADIRLAKLYGADGLVFGALTEDGHIDKELCMSLMAICRPL PVTFHRAFDMVHDPMAALETLLTLGFERVLTSGCDSSALEGLPLIKRLIEQAKGRIVMPGGGITDRNLQ RILEGSGATEFHCSARSTRDSGMKFRNSSVAMGASLSCSEYSLKVTDVTKVRTLNIAIAKNILV SGPTRTRPLEQKLISEEDLAANDILDYKDDDDKV
Tag:	C-Myc/DDK
Predicted MW:	29.2 kDa
Concentration:	>0.05 µg/µL as determined by microplate BCA method
Purity:	> 80% as determined by SDS-PAGE and Coomassie blue staining
Buffer:	25 mM Tris-HCl, 100 mM glycine, pH 7.3, 10% glycerol
Preparation:	Recombinant protein was captured through anti-DDK affinity column followed by conventional chromatography steps.
Note:	For testing in cell culture applications, please filter before use. Note that you may experience some loss of protein during the filtration process.
Storage:	Store at -80°C.
Stability:	Stable for 12 months from the date of receipt of the product under proper storage and handling conditions. Avoid repeated freeze-thaw cycles.
RefSeq:	NP_057044
Locus ID:	51076
UniProt ID:	Q9NTM9



[View online »](#)

RefSeq Size: 1378

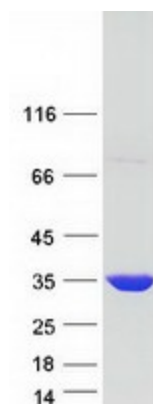
Cytogenetics: 10q24.2

RefSeq ORF: 819

Synonyms: CGI-32

Summary: Members of the CUT family of copper transporters are associated with copper homeostasis and are involved in the uptake, storage, delivery, and efflux of copper (Gupta et al., 1995 [PubMed 7635807]; Li et al., 2005 [PubMed 16182249]).[supplied by OMIM, Mar 2008]

Product images:



Coomassie blue staining of purified CUTC protein (Cat# TP305748). The protein was produced from HEK293T cells transfected with CUTC cDNA clone (Cat# [RC205748]) using MegaTran 2.0 (Cat# [TT210002]).