

Product datasheet for TP305725M

Eph receptor A2 (EPHA2) (NM_004431) Human Recombinant Protein

Product data:

Product Type: Recombinant Proteins
Description: Recombinant protein of human EPH receptor A2 (EPHA2), 100 µg
Species: Human
Expression Host: HEK293T
Expression cDNA Clone or AA Sequence: >RC205725 representing NM_004431
Red=Cloning site Green=Tags(s)

MELQAARACFALLWGCALAAAAAQQKEVLLDFAAAGGELGWLTHPYGKGWDLMQNIMNDMPIYMYSVC
 NVMSGDQDNWLR TNWVYRGEAERIFIELKFTVRDCNSFPGGASSCKETFNLYAESDL DYGTNFQKRLFT
 KIDTIAPDEITVSSDFEARHVKLNVEERSVGPLTRKGFYLA FQDIGACVALLSVRVYK KPELLQGLAH
 FPETIAGSDAPSLATVAGTCVDHAVPPGGEEPRMHCAVDGEWLVP I GQCLCQAGYEKVEDACQACSPGF
 FKFEASESPCLECEHTLPSPEGATSCECEEGFFRAPQDPASMPCTRPPSAPHYLTA VGMGAKVELRWTP
 PQDSGGREDIVYSVTCEQCWPESGECGPCEASVRYSEPPHGLTRTSVTVSDLEPHMNYTFTVEARNGVSG
 LVTSSFR TASVSINQTEPPKVRLEGRSTTSLSVSWSIPPQQSRVWKYEV TYRKKGDSNSYNVRTEGF
 SVTLDDLAPDTTYLVQVQALTQEQGAGSKVHEFQTLSP EGSNLA VIGGVA VGVLLLVLAVGVGFFIHR
 RRKNQRARQSPEDVYFSKSEQLKPLKTYVDPHTYEDPNQAVLKF TTEIHPSCVTRQKVIGAGEFGVEYK
 MLKTSSGKKEVPVAIKTLKAGYTEKQRVDFLGEAGIMGQFSHHNIIRLEGVISKYKPMMIITEYMENGAL
 DKFLREKDG EFSVLQLVGMLRGIAAGMKYLANMNYVHRDLAARNILVNSNLVCKVSD FGLSRVLEDDPEA
 TYTSSGGKIPIRWTAPEAISYRKFTSASDVWSFGIVMWEVMTYGERPYWELSNHEVMKAIN DGFRLPTPM
 DCPSAIYQLMMQCWQQRARRPKFADIVSILDKLIRAPDSLKTLADFDPRVSIRLPSTSGSEGVPPFRTVS
 EWLESIKMQQYTEHFMAAGYTAIEKVVQMTNDDIKRIGVRLPGHQKRIAYSLLGLKDQVNTVGIPI

RTRPLEQKLISEEDLAANDILDYKDDDDKV

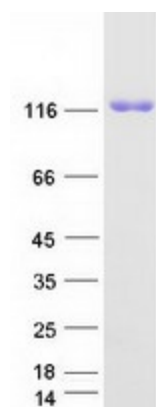
Tag: C-Myc/DDK
Predicted MW: 108.1 kDa
Concentration: >0.05 µg/µL as determined by microplate BCA method
Purity: > 80% as determined by SDS-PAGE and Coomassie blue staining
Buffer: 25 mM Tris-HCl, 100 mM glycine, pH 7.3, 10% glycerol
Preparation: Recombinant protein was captured through anti-DDK affinity column followed by conventional chromatography steps.



[View online »](#)

Note:	For testing in cell culture applications, please filter before use. Note that you may experience some loss of protein during the filtration process.
Storage:	Store at -80°C.
Stability:	Stable for 12 months from the date of receipt of the product under proper storage and handling conditions. Avoid repeated freeze-thaw cycles.
RefSeq:	NP_004422
Locus ID:	1969
UniProt ID:	P29317 , A0A024QZA8
RefSeq Size:	3963
Cytogenetics:	1p36.13
RefSeq ORF:	2928
Synonyms:	ARCC2; CTPA; CTPP1; CTRCT6; ECK
Summary:	This gene belongs to the ephrin receptor subfamily of the protein-tyrosine kinase family. EPH and EPH-related receptors have been implicated in mediating developmental events, particularly in the nervous system. Receptors in the EPH subfamily typically have a single kinase domain and an extracellular region containing a Cys-rich domain and 2 fibronectin type III repeats. The ephrin receptors are divided into 2 groups based on the similarity of their extracellular domain sequences and their affinities for binding ephrin-A and ephrin-B ligands. This gene encodes a protein that binds ephrin-A ligands. Mutations in this gene are the cause of certain genetically-related cataract disorders.[provided by RefSeq, May 2010]
Protein Families:	Druggable Genome, Protein Kinase, Transmembrane
Protein Pathways:	Axon guidance

Product images:



Coomassie blue staining of purified EPHA2 protein (Cat# [TP305725]). The protein was produced from HEK293T cells transfected with EPHA2 cDNA clone (Cat# [RC205725]) using MegaTran 2.0 (Cat# [TT210002]).