

## Product datasheet for TP305725

### Eph receptor A2 (EPHA2) (NM\_004431) Human Recombinant Protein

#### Product data:

Product Type:	Recombinant Proteins
Description:	Recombinant protein of human EPH receptor A2 (EPHA2), 20 µg
Species:	Human
Expression Host:	HEK293T
Expression cDNA Clone or AA Sequence:	>RC205725 representing NM_004431 Red=Cloning site Green=Tags(s)

MELQAARACFALLWGCALAAAAAQQKEVLLDFAAAGGELGWLTHPYGKGWDLMQNIMNDMPIYMYSVC  
NVMSGDQDNWLRNWWYRGEAERIFIELKFTVRDCNSFPGGASSCKETFNLYAESDLDYGTNFQKRLFT  
KIDTIAPDEITVSSDFEARHVKLNVEERSVGPLTRKGFYLAQDIGACVALLSVRVYKCKPELLQGLAH  
FPETIAGSDAPSLATVAGTCVDHAVPPGGEEPMMHCAVDGEWLVPIGQCLCQAGYEKVEDACQACSPGF  
FKFEASESPCLECEHTLPSPEGATSCECEEGFFRAPQDPASMPCTRPPSAPHYLTAVGMGAKVELRWTP  
PQDSGGREDIVYSVTCEQCWPESGECGPCEASVRYSEPPHGLTRTSVTVSDLEPHMNYTFTVEARNGVSG  
LVTSSFRITASVSINQTEPPKVRLEGRSTTSLVSVSIPPQQSRVWKYEVYTRKKGDSNSYNVRRTEGF  
SVTLDDLAPDTTYLVQVQALTQEQGAGSKVHEFQTLSPGSGNLAVIGGVAVGVLLLLVLAVGVFFIHR  
RRKNQRARQSPEDVYFSKSEQLKPLKTYVDPHTYEDPNQAVLKFTTEIHPSCVTRQKVI GAGEFGVEYK  
MLKTSSGKKEVPVAIKTLKAGYTEKQRVDFLGEAGIMGQFSHHNIIRLEGVISKYKPMMIITEYMENGAL  
DKFLREKDGESVLQLVGMLRGIAAGMKYLANMNYVHRDLAARNILVNSNLVCKVSDFGLSRVLEDDPEA  
TYTSSGGKIPIRWTAPEAISYRKFTSASDVWSFGIVMWEVMTYGERPYWELSNHEVMKAINDFRLPTPM  
DCPSAIYQLMMQCWQQRARRPKFADIVSILDKLIRAPDSLKTLADFPRVSIRLPSTSGSEGVPPFRTVS  
EWLESIKMQQYTEHFMAAGYTAIEKVVQMTNDDIKRIGVRLPGHQKRIAYSLLGLKDQVNTVGIPI

TRTRPLEQKLISEEDLAANDILDYKDDDDKV

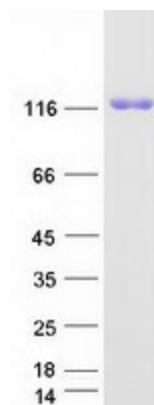
Tag:	C-Myc/DDK
Predicted MW:	108.1 kDa
Concentration:	>0.05 µg/µL as determined by microplate BCA method
Purity:	> 80% as determined by SDS-PAGE and Coomassie blue staining
Buffer:	25 mM Tris-HCl, 100 mM glycine, pH 7.3, 10% glycerol
Preparation:	Recombinant protein was captured through anti-DDK affinity column followed by conventional chromatography steps.



[View online »](#)

<b>Note:</b>	For testing in cell culture applications, please filter before use. Note that you may experience some loss of protein during the filtration process.
<b>Storage:</b>	Store at -80°C.
<b>Stability:</b>	Stable for 12 months from the date of receipt of the product under proper storage and handling conditions. Avoid repeated freeze-thaw cycles.
<b>RefSeq:</b>	<a href="#">NP_004422</a>
<b>Locus ID:</b>	1969
<b>UniProt ID:</b>	<a href="#">P29317</a> , <a href="#">A0A024QZA8</a>
<b>RefSeq Size:</b>	3963
<b>Cytogenetics:</b>	1p36.13
<b>RefSeq ORF:</b>	2928
<b>Synonyms:</b>	ARCC2; CTPA; CTPP1; CTRCT6; ECK
<b>Summary:</b>	This gene belongs to the ephrin receptor subfamily of the protein-tyrosine kinase family. EPH and EPH-related receptors have been implicated in mediating developmental events, particularly in the nervous system. Receptors in the EPH subfamily typically have a single kinase domain and an extracellular region containing a Cys-rich domain and 2 fibronectin type III repeats. The ephrin receptors are divided into 2 groups based on the similarity of their extracellular domain sequences and their affinities for binding ephrin-A and ephrin-B ligands. This gene encodes a protein that binds ephrin-A ligands. Mutations in this gene are the cause of certain genetically-related cataract disorders.[provided by RefSeq, May 2010]
<b>Protein Families:</b>	Druggable Genome, Protein Kinase, Transmembrane
<b>Protein Pathways:</b>	Axon guidance

### Product images:



Coomassie blue staining of purified EPHA2 protein (Cat# TP305725). The protein was produced from HEK293T cells transfected with EPHA2 cDNA clone (Cat# [RC205725]) using MegaTran 2.0 (Cat# [TT210002]).