

Product datasheet for TP305723L

Proteasome subunit beta type 4 (PSMB4) (NM_002796) Human Recombinant Protein

Product data:

Product Type:	Recombinant Proteins
Description:	Recombinant protein of human proteasome (prosome, macropain) subunit, beta type, 4 (PSMB4), 1 mg
Species:	Human
Expression Host:	HEK293T
Expression cDNA Clone or AA Sequence:	>RC205723 representing NM_002796 Red=Cloning site Green=Tags(s)

MEAFGLSRSGLWAGGPAPGQFYRIPSTPDSFMDPASALYRGPITRTQNPMTGTSVLGVKFEGGWIAAD
MLGSYGLARFRNISRIMRVNNSTMLGASGDYADFQYLKQVLGQMVIDEELLGDGHSYPRAIHSWLTRA
MYSRRSKMNPLWNTMVIGGYADGESFLGYVDM LGVAYEAPSLATGYGAYLAQPLLREVLEKQPVLSQTEA
RDLVERCMRVLYRDARSYNRFQIATVTEKGVEIEGPLSTETNWDIAHMISGFE

TRTRPLEQKLISEEDLAANDILDYKDDDDKV

Tag:	C-Myc/DDK
Predicted MW:	29 kDa
Concentration:	>0.05 µg/µL as determined by microplate BCA method
Purity:	> 80% as determined by SDS-PAGE and Coomassie blue staining
Buffer:	25 mM Tris-HCl, 100 mM glycine, pH 7.3, 10% glycerol
Preparation:	Recombinant protein was captured through anti-DDK affinity column followed by conventional chromatography steps.
Note:	For testing in cell culture applications, please filter before use. Note that you may experience some loss of protein during the filtration process.
Storage:	Store at -80°C.
Stability:	Stable for 12 months from the date of receipt of the product under proper storage and handling conditions. Avoid repeated freeze-thaw cycles.
RefSeq:	<u>NP_002787</u>
Locus ID:	5692



[View online »](#)

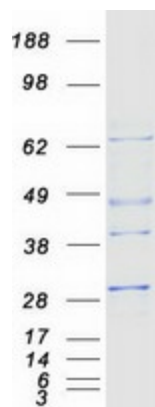
UniProt ID: [P28070](#), [A0A140VK46](#)
 RefSeq Size: 925
 Cytogenetics: 1q21.3
 RefSeq ORF: 792
 Synonyms: HN3; HsN3; PRAAS3; PROS-26; PROS26

Summary: The proteasome is a multicatalytic proteinase complex with a highly ordered ring-shaped 20S core structure. The core structure is composed of 4 rings of 28 non-identical subunits; 2 rings are composed of 7 alpha subunits and 2 rings are composed of 7 beta subunits. Proteasomes are distributed throughout eukaryotic cells at a high concentration and cleave peptides in an ATP/ubiquitin-dependent process in a non-lysosomal pathway. An essential function of a modified proteasome, the immunoproteasome, is the processing of class I MHC peptides. This gene encodes a member of the proteasome B-type family, also known as the T1B family, that is a 20S core beta subunit. [provided by RefSeq, Jul 2008]

Protein Families: Druggable Genome, Protease

Protein Pathways: Proteasome

Product images:



Coomassie blue staining of purified PSMB4 protein (Cat# [TP305723]). The protein was produced from HEK293T cells transfected with PSMB4 cDNA clone (Cat# [RC205723]) using MegaTran 2.0 (Cat# [TT210002]).