

Product datasheet for **TP305708L**

Adipose Triglyceride Lipase (PNPLA2) (NM_020376) Human Recombinant Protein

Product data:

Product Type:	Recombinant Proteins
Description:	Recombinant protein of human patatin-like phospholipase domain containing 2 (PNPLA2), 1 mg
Species:	Human
Expression Host:	HEK293T
Expression cDNA Clone or AA Sequence:	>RC205708 protein sequence Red =Cloning site Green =Tags(s)

MFPREKTWNISFAGCGFLGVVYVGVASCLREHAPFLVANATHIYGASAGALTATALVTGVCLGEAGAKFI
EVSKEARKRFLGPLHPSFNLVKIIRSFLKVLPADESHEHASGRLGISLTRVSDGENVIISHFNSKDELIQ
ANVCSGFIPVYCGLIPPSLQGVRYVDGGISDNLPYELKNTITVSPFSGESDIPCQDSSTNIHELVRTNT
SIQFNLRNLYRLSKALFPPEPLVIREMCKQGYRDGLRFLQRNGLLRPNPLALPPARPHGPEDKDQAVE
SAQAEDYSQLPGEDHILEHLPARLNEALLEACVEPTDLLTTLNMLPVRLATAMMVPYTLPLESALSFTI
RLEWLPDVPEDIRWMKEQTGSICQYLMRAKRKLGRHLP SRLPEQVELRRVQSLPSVPLSCAAAYREALP
GWMRNNLSLGDALAKWEECQRQLLLGLFCTNVAFPPEALRM RAPADPAPAPADPASPQHQLAGPAPLLST
PAPEARPVIGALGL

TRTRPLEQKLISEEDLAANDILDYKDDDDKV

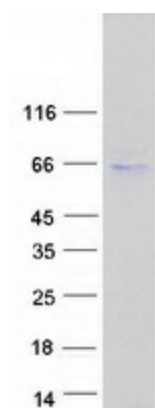
Tag:	C-Myc/DDK
Predicted MW:	55.1 kDa
Concentration:	>0.05 µg/µL as determined by microplate BCA method
Purity:	> 80% as determined by SDS-PAGE and Coomassie blue staining
Buffer:	25 mM Tris-HCl, 100 mM glycine, pH 7.3, 10% glycerol
Preparation:	Recombinant protein was captured through anti-DDK affinity column followed by conventional chromatography steps.
Note:	For testing in cell culture applications, please filter before use. Note that you may experience some loss of protein during the filtration process.
Storage:	Store at -80°C.
Stability:	Stable for 12 months from the date of receipt of the product under proper storage and handling conditions. Avoid repeated freeze-thaw cycles.



[View online >](#)

RefSeq:	NP_065109
Locus ID:	57104
UniProt ID:	Q96AD5
RefSeq Size:	2443
Cytogenetics:	11p15.5
RefSeq ORF:	1512
Synonyms:	1110001C14Rik; ATGL; FP17548; iPLA2zeta; PEDF-R; TTS-2.2; TTS2
Summary:	This gene encodes an enzyme which catalyzes the first step in the hydrolysis of triglycerides in adipose tissue. Mutations in this gene are associated with neutral lipid storage disease with myopathy. [provided by RefSeq, Jul 2010]
Protein Families:	Transmembrane

Product images:



Coomassie blue staining of purified PNPLA2 protein (Cat# [TP305708]). The protein was produced from HEK293T cells transfected with PNPLA2 cDNA clone (Cat# [RC205708]) using MegaTran 2.0 (Cat# [TT210002]).