

Product datasheet for **TP305704M**

LMAN2 (NM_006816) Human Recombinant Protein

Product data:

| | |
|---------------------------------------|---|
| Product Type: | Recombinant Proteins |
| Description: | Recombinant protein of human lectin, mannose-binding 2 (LMAN2), 100 µg |
| Species: | Human |
| Expression Host: | HEK293T |
| Expression cDNA Clone or AA Sequence: | >RC205704 protein sequence Red =Cloning site Green =Tags(s) |
| | <p>MAAEGWIWRWGWGRRCLGRPGLLGPGPGPTTPLFLLLLGSVTADITDGNSEHLKREHSLIKPYQGVGSS SMPLWDFQGSTMLTSQYVRLTPDERSKEGSIWNHQPCKLDWEMHVHFVHGTGKKNLHGDGIALWYTRD RLVPGPVFGSKDNFHLAIFLDTYPNDETERVFPYISVMVNNNGSLSYDHSKDGRWTELAGCTADFRNRD HDTFLAVRYSRGLTVMTDLEDKNEWKNCIDITGVRLPTGYFFGASAGTGDLSDNHDIISMKLFQLMVEH TPDEESIDWTKIEPSVNFLKSPKDNVDDPTGNFRSGPLTGWRVFLLLCALLGIVCAVVGAVVFQKRQE RNKRFY</p> <p>TRTRPLEQKLISEEDLAANDILDYKDDDDKV</p> |
| Tag: | C-Myc/DDK |
| Predicted MW: | 35.5 kDa |
| Concentration: | >0.05 µg/µL as determined by microplate BCA method |
| Purity: | > 80% as determined by SDS-PAGE and Coomassie blue staining |
| Buffer: | 25 mM Tris-HCl, 100 mM glycine, pH 7.3, 10% glycerol |
| Preparation: | Recombinant protein was captured through anti-DDK affinity column followed by conventional chromatography steps. |
| Note: | For testing in cell culture applications, please filter before use. Note that you may experience some loss of protein during the filtration process. |
| Storage: | Store at -80°C. |
| Stability: | Stable for 12 months from the date of receipt of the product under proper storage and handling conditions. Avoid repeated freeze-thaw cycles. |
| RefSeq: | <u>NP_006807</u> |
| Locus ID: | 10960 |



[View online »](#)

UniProt ID: [Q12907](#), [A0A384NPY7](#)

RefSeq Size: 1853

Cytogenetics: 5q35.3

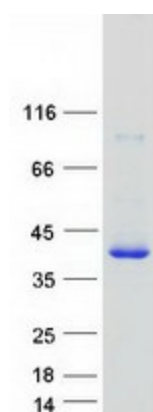
RefSeq ORF: 1068

Synonyms: C5orf8; GP36B; VIP36

Summary: This gene encodes a type I transmembrane lectin that shuttles between the endoplasmic reticulum, the Golgi apparatus and the plasma membrane. The encoded protein binds high mannose type glycoproteins and may facilitate their sorting, trafficking and quality control. [provided by RefSeq, Oct 2008]

Protein Families: Transmembrane

Product images:



Coomassie blue staining of purified LMAN2 protein (Cat# [TP305704]). The protein was produced from HEK293T cells transfected with LMAN2 cDNA clone (Cat# [RC205704]) using MegaTran 2.0 (Cat# [TT210002]).