

Product datasheet for **TP305704**

LMAN2 (NM_006816) Human Recombinant Protein

Product data:

Product Type:	Recombinant Proteins
Description:	Recombinant protein of human lectin, mannose-binding 2 (LMAN2), 20 µg
Species:	Human
Expression Host:	HEK293T
Expression cDNA Clone or AA Sequence:	>RC205704 protein sequence Red =Cloning site Green =Tags(s)
	<p>MAAEGWIWRWGWGRRCLGRPGLLGPGPGPTTPLLLLLGSVTADITDGNSEHLKREHSLIKPYQGVGSS SMPLWDFQGSTMLTSQYVRLTPDERSKEGSIWNHQPCKLDWEMHVFHFKVHGTGKKNLHGDGIALWYTRD RLVPGPVFGSKDNFHLAIFLDTYPNDETERVFPYISVMVNNGSLSYDHSKDGRWTELAGCTADFRNRD HDTFLAVRYSRGLTVMTDLEDKNEWKNCIDITGVRLPTGYFFGASAGTGDLSDNHDIISMKLFQLMVEH TPDEESIDWTKIEPSVNFLKSPKDNVDDPTGNFRSGPLTGWRVLLLLCALLGIVCAVVGAVVFQKRQE RNKRFY</p> <p>TRTRPLEQKLISEEDLAANDILDYKDDDDKV</p>
Tag:	C-Myc/DDK
Predicted MW:	35.5 kDa
Concentration:	>0.05 µg/µL as determined by microplate BCA method
Purity:	> 80% as determined by SDS-PAGE and Coomassie blue staining
Buffer:	25 mM Tris-HCl, 100 mM glycine, pH 7.3, 10% glycerol
Preparation:	Recombinant protein was captured through anti-DDK affinity column followed by conventional chromatography steps.
Note:	For testing in cell culture applications, please filter before use. Note that you may experience some loss of protein during the filtration process.
Storage:	Store at -80°C.
Stability:	Stable for 12 months from the date of receipt of the product under proper storage and handling conditions. Avoid repeated freeze-thaw cycles.
RefSeq:	NP_006807
Locus ID:	10960



[View online »](#)

UniProt ID: [Q12907](#), [A0A384NPY7](#)

RefSeq Size: 1853

Cytogenetics: 5q35.3

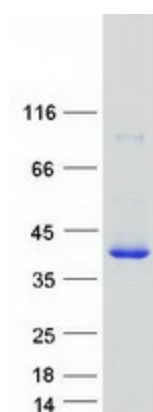
RefSeq ORF: 1068

Synonyms: C5orf8; GP36B; VIP36

Summary: This gene encodes a type I transmembrane lectin that shuttles between the endoplasmic reticulum, the Golgi apparatus and the plasma membrane. The encoded protein binds high mannose type glycoproteins and may facilitate their sorting, trafficking and quality control. [provided by RefSeq, Oct 2008]

Protein Families: Transmembrane

Product images:



Coomassie blue staining of purified LMAN2 protein (Cat# TP305704). The protein was produced from HEK293T cells transfected with LMAN2 cDNA clone (Cat# [RC205704]) using MegaTran 2.0 (Cat# [TT210002]).