

Product datasheet for **TP305692M**

Alkaline Phosphatase (ALPL) (NM_000478) Human Recombinant Protein

Product data:

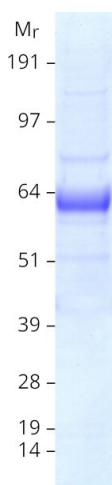
Product Type:	Recombinant Proteins
Description:	Recombinant protein of human alkaline phosphatase, liver/bone/kidney (ALPL), transcript variant 1, 100 µg
Species:	Human
Expression Host:	HEK293T
Expression cDNA Clone or AA Sequence:	>RC205692 protein sequence Red =Cloning site Green =Tags(s)
	MISPFLVLAIGTCLTNSLVPEKEKDPKYWRDQAQETLKYALELQKLNTNVAKNVIMFLGDGMGVSTVTAA RILKGQLHHNPGEETRLEMDKFPFVALSKTYNTNAQVPDSAGTATAYLCGVKANEGTVGVSAATERSRCN TTQGNEVTSILRWAKDAGKSVGIVTTTRVNHATPSAAYAHSADRDWYSDNEMPPEALSQGCKDIAYQLMH NIRDIDVIMGGGRKYMYPKNKTDVEYESDEKARGTRLDGLDLVDTWKSFKPRYKHSFIWNRTELLTLP HNVDYLLGLFEPGDMQYELNRNNVTDPSEMVVAIQILRKNPKGFFLLVEGGRIDHGHHEGKAKQALH EAVEMDRAIGQAGSLTSSDRTLTVTADHSHVFTFGGYTPRGNSIFGLAPMLSDTDKKPFTAILYGNPGP YKVVGGERENVMVDYAHNNYQAQSAVPLRHETHGGEDVAVFSKGPMAHLLHGVHEQNYVPHVMAYAACI GANLGHCAPASSAGSLAAGPLLLALALYPLSVLF TRTRPLEQKLISEEDLAANDILDYKDDDDKV
Tag:	C-Myc/DDK
Predicted MW:	55.5 kDa
Concentration:	>0.05 µg/µL as determined by microplate BCA method
Purity:	> 80% as determined by SDS-PAGE and Coomassie blue staining
Buffer:	25 mM Tris-HCl, 100 mM glycine, pH 7.3, 10% glycerol
Preparation:	Recombinant protein was captured through anti-DDK affinity column followed by conventional chromatography steps.
Note:	For testing in cell culture applications, please filter before use. Note that you may experience some loss of protein during the filtration process.
Storage:	Store at -80°C.



[View online »](#)

Stability:	Stable for 12 months from the date of receipt of the product under proper storage and handling conditions. Avoid repeated freeze-thaw cycles.
RefSeq:	NP_000469
Locus ID:	249
UniProt ID:	P05186 , A0A024RAB4
RefSeq Size:	2606
Cytogenetics:	1p36.12
RefSeq ORF:	1572
Synonyms:	AP-TNAP; APTNAP; HOPS; HPPA; HPPC; HPPI; HPPO; TNALP; TNAP; TNSALP
Summary:	This gene encodes a member of the alkaline phosphatase family of proteins. There are at least four distinct but related alkaline phosphatases: intestinal, placental, placental-like, and liver/bone/kidney (tissue non-specific). The first three are located together on chromosome 2, while the tissue non-specific form is located on chromosome 1. The product of this gene is a membrane bound glycosylated enzyme that is not expressed in any particular tissue and is, therefore, referred to as the tissue-nonspecific form of the enzyme. Alternative splicing results in multiple transcript variants, at least one of which encodes a preproprotein that is proteolytically processed to generate the mature enzyme. This enzyme may play a role in bone mineralization. Mutations in this gene have been linked to hypophosphatasia, a disorder that is characterized by hypercalcemia and skeletal defects. [provided by RefSeq, Oct 2015]
Protein Families:	Druggable Genome
Protein Pathways:	Folate biosynthesis, Metabolic pathways

Product images:



Coomassie blue staining of purified ALPL protein (Cat# [TP305692]). The protein was produced from HEK293T cells transfected with ALPL cDNA clone (Cat# [RC205692]) using MegaTran 2.0 (Cat# [TT210002]).