

Product datasheet for **TP305686L**

Asialoglycoprotein Receptor 1 (ASGR1) (NM_001671) Human Recombinant Protein

Product data:

Product Type: Recombinant Proteins

Description: Recombinant protein of human asialoglycoprotein receptor 1 (ASGR1), 1 mg

Species: Human

Expression Host: HEK293T

Expression >RC205686 protein sequence

cDNA Clone or **Red**=Cloning site **Green**=Tags(s)

AA Sequence:

MTKEYQDLQHLDNEESDHHQLRKGPPLPQLLQRLCSGPRLLLLSLGLSLLLLVWVCVIGSQNSQLQEEL
RGLRETFNFTASTEAVKGLSTQGGNVGRKMKSLQLEKQKDLSEDHSSLLLHVKQFVSDLRSLSCQ
MAALQNGSERTCCPVNWEHERSCYWFSRSGKAWADADNYCRLEDAHLVWTSWEEQKFVQHHIGPVNT
WMGLHDQNGPWKWVDGTDYETGFKNWRPEQPDDWYGHGLGGGEDCAHFTDDGRWDDVCQRPYRWVCETE
LDKASQEPPLL

TRTRPLEQKLISEEDLAANDILDYKDDDDKV

Tag: C-Myc/DDK

Predicted MW: 33 kDa

Concentration: >0.05 µg/µL as determined by microplate BCA method

Purity: > 80% as determined by SDS-PAGE and Coomassie blue staining

Buffer: 25 mM Tris-HCl, 100 mM glycine, pH 7.3, 10% glycerol

Preparation: Recombinant protein was captured through anti-DDK affinity column followed by conventional chromatography steps.

Note: For testing in cell culture applications, please filter before use. Note that you may experience some loss of protein during the filtration process.

Storage: Store at -80°C.

Stability: Stable for 12 months from the date of receipt of the product under proper storage and handling conditions. Avoid repeated freeze-thaw cycles.

RefSeq: [NP_001662](#)

Locus ID: 432



[View online »](#)

UniProt ID: [P17661](#), [P07306](#), [Q53SB5](#), [Q6FGQ5](#)

RefSeq Size: 1519

Cytogenetics: 17p13.1

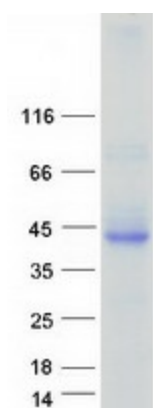
RefSeq ORF: 873

Synonyms: ASGPR; ASGPR1; CLEC4H1; HL-1

Summary: This gene encodes a subunit of the asialoglycoprotein receptor. This receptor is a transmembrane protein that plays a critical role in serum glycoprotein homeostasis by mediating the endocytosis and lysosomal degradation of glycoproteins with exposed terminal galactose or N-acetylgalactosamine residues. The asialoglycoprotein receptor may facilitate hepatic infection by multiple viruses including hepatitis B, and is also a target for liver-specific drug delivery. The asialoglycoprotein receptor is a hetero-oligomeric protein composed of major and minor subunits, which are encoded by different genes. The protein encoded by this gene is the more abundant major subunit. Alternatively spliced transcript variants encoding multiple isoforms have been observed for this gene. [provided by RefSeq, Jan 2011]

Protein Families: Druggable Genome, Transmembrane

Product images:



Coomassie blue staining of purified ASGR1 protein (Cat# [TP305686]). The protein was produced from HEK293T cells transfected with ASGR1 cDNA clone (Cat# [RC205686]) using MegaTran 2.0 (Cat# [TT210002]).