

Product datasheet for TP305678

Stromal interaction molecule 1 (STIM1) (NM_003156) Human Recombinant Protein

Product data:

Product Type:	Recombinant Proteins
Description:	Recombinant protein of human stromal interaction molecule 1 (STIM1), 20 µg
Species:	Human
Expression Host:	HEK293T
Expression cDNA Clone or AA Sequence:	>RC205678 representing NM_003156 Red=Cloning site Green=Tags(s)

MDVCVRLALWLLWGLLLHQGQSLSHSHSEKATGTSSGANSEESTAAEFKRIDKPLCHSEDEKLSFEAVRN
IHKLMDDDANGDVDVEESDEFRLREDLNYHDPTVKHSTFHGEDKLISVEDLWKAWKSSEVYNWTVDEVVQW
LITYVELPQYEETFRKLQLSGHAMPRLAVTNTTMTGTVLKMTDRSHRQLQLKALDVLFGPPLLRHNNH
LKDFMLVVSIVIGVGGCWFAYIQNRYSKHEHMKMMKDLEGLHRAEQSLHDLQERLHKAQEEHRTVEVEKV
HLEKKLRDEINLAKQEAQRLKELREGTENERSRQKYAEEEEQVREALRKAKEKELSHSSWYAPEALQKW
LQLTHEVEVQYNNIKKQNAEKQLLVAKEGAEEKIKKRNTLFGTFHVAHSSSLDDVDHKILTAKQALSEVT
AALRERLHRWQIEILCGFQIVNPNPGIHSVAALNIDPSWGMGSTRPNPAHFIMTDDVDDMDEEIVSPLSM
QSPSLQSSVRQLTEPQHGLGSQRDLTHSDSESSLHMSDRQRVAPKPPQMSRAADEALNAMTSNGSHRLI
EGVHPGSLVEKLPDSPAALAKKALLALNHGLDKAHSMLSPSAPPGGSPHLDSSRSHPSPSPDPDTPSPV
GDSRALQASRNTRIPHLAGKKAVAEEDNGSIGEETDSSPGRKKFPLKIFKKPLKK

TRTRPLEQKLISEEDLAANDILDYKDDDDKV

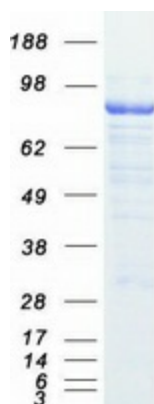
Tag:	C-Myc/DDK
Predicted MW:	74.8 kDa
Concentration:	>0.05 µg/µL as determined by microplate BCA method
Purity:	> 80% as determined by SDS-PAGE and Coomassie blue staining
Buffer:	25 mM Tris-HCl, 100 mM glycine, pH 7.3, 10% glycerol
Preparation:	Recombinant protein was captured through anti-DDK affinity column followed by conventional chromatography steps.
Note:	For testing in cell culture applications, please filter before use. Note that you may experience some loss of protein during the filtration process.
Storage:	Store at -80°C.



[View online »](#)

Stability:	Stable for 12 months from the date of receipt of the product under proper storage and handling conditions. Avoid repeated freeze-thaw cycles.
RefSeq:	NP_003147
Locus ID:	6786
UniProt ID:	Q13586
RefSeq Size:	4039
Cytogenetics:	11p15.4
RefSeq ORF:	2055
Synonyms:	D11S4896E; GOK; IMD10; STRMK; TAM; TAM1
Summary:	<p>This gene encodes a type 1 transmembrane protein that mediates Ca²⁺ influx after depletion of intracellular Ca²⁺ stores by gating of store-operated Ca²⁺ influx channels (SOCs). It is one of several genes located in the imprinted gene domain of 11p15.5, an important tumor-suppressor gene region. Alterations in this region have been associated with the Beckwith-Wiedemann syndrome, Wilms tumor, rhabdomyosarcoma, adrenocortical carcinoma, and lung, ovarian, and breast cancer. This gene may play a role in malignancies and disease that involve this region, as well as early hematopoiesis, by mediating attachment to stromal cells. Mutations in this gene are associated with fatal classic Kaposi sarcoma, immunodeficiency due to defects in store-operated calcium entry (SOCE) in fibroblasts, ectodermal dysplasia and tubular aggregate myopathy. This gene is oriented in a head-to-tail configuration with the ribonucleotide reductase 1 gene (RRM1), with the 3' end of this gene situated 1.6 kb from the 5' end of the RRM1 gene. Alternative splicing of this gene results in multiple transcript variants. [provided by RefSeq, May 2013]</p>
Protein Families:	Transmembrane

Product images:



Coomassie blue staining of purified STIM1 protein (Cat# TP305678). The protein was produced from HEK293T cells transfected with STIM1 cDNA clone (Cat# [RC205678]) using MegaTran 2.0 (Cat# [TT210002]).