

## Product datasheet for **TP305669M**

### **CAMK2B (NM\_172081) Human Recombinant Protein**

#### Product data:

**Product Type:** Recombinant Proteins

**Description:** Recombinant protein of human calcium/calmodulin-dependent protein kinase II beta (CAMK2B), transcript variant 5, 100 µg

**Species:** Human

**Expression Host:** HEK293T

**Expression cDNA Clone or AA Sequence:** >RC205669 protein sequence  
**Red**=Cloning site **Green**=Tags(s)

MATTVTCTRFTDEYQLYEDIGKGAFSVRRRCVKLCTGHEYAAKIINTKKLSARDHQKLEREARICRLKHSNIVRLHDSISEEGFHYLVFDLVTGGELFEDIVAREYYSEADASHCIQQILEAVLHCHQMGGVHRDLKPE  
NLLASKCKGAAVKLADFLAIEVQGDQQAWFAGTGPYLSPEVLRKEAYGKPVDIWACGVILYILLVGYPPFWD  
EDQHKLYQQIKAGAYDFPSPEWDTVTPEAKNLINQMLTINPAKRITAHEALKHPWVCQRSTVASMMHRQ  
ETVECLKKFNARRKLGAILTTMLATRNFSAAKSLNKKADGVKPKQNTSTKNSAAATSPKGTLPAALES  
SDSANTTIEDEDAKARKQEIIKTTEQLIEAVNNGDFEAYAKICDPGLTSFEPEALGNLVEGMDFHRFY  
FENLLAKNSKPIHTILNPHVHVIGEDAACIAYIRLTQYIDGQGRPTSQSEETRVWHRDRDGKQWQNV  
HFHCSGAPVAPLQ

**TRTRPLEQKLISEEDLAANDILDYKDDDDKV**

**Tag:** C-Myc/DDK

**Predicted MW:** 56.2 kDa

**Concentration:** >0.05 µg/µL as determined by microplate BCA method

**Purity:** > 80% as determined by SDS-PAGE and Coomassie blue staining

**Buffer:** 25 mM Tris-HCl, 100 mM glycine, pH 7.3, 10% glycerol

**Preparation:** Recombinant protein was captured through anti-DDK affinity column followed by conventional chromatography steps.

**Note:** For testing in cell culture applications, please filter before use. Note that you may experience some loss of protein during the filtration process.

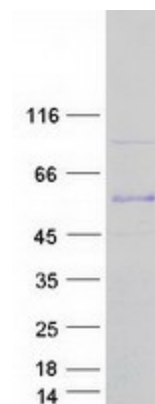
**Storage:** Store at -80°C.



[View online »](#)

<b>Stability:</b>	Stable for 12 months from the date of receipt of the product under proper storage and handling conditions. Avoid repeated freeze-thaw cycles.
<b>RefSeq:</b>	<a href="#">NP_742078</a>
<b>Locus ID:</b>	816
<b>UniProt ID:</b>	<a href="#">Q13554</a>
<b>RefSeq Size:</b>	4097
<b>Cytogenetics:</b>	7p13
<b>RefSeq ORF:</b>	1509
<b>Synonyms:</b>	CAM2; CAMK2; CAMKB; CaMKIIbeta; MRD54
<b>Summary:</b>	The product of this gene belongs to the serine/threonine protein kinase family and to the Ca(2+)/calmodulin-dependent protein kinase subfamily. Calcium signaling is crucial for several aspects of plasticity at glutamatergic synapses. In mammalian cells, the enzyme is composed of four different chains: alpha, beta, gamma, and delta. The product of this gene is a beta chain. It is possible that distinct isoforms of this chain have different cellular localizations and interact differently with calmodulin. Alternative splicing results in multiple transcript variants. [provided by RefSeq, May 2014]
<b>Protein Families:</b>	Druggable Genome, Protein Kinase
<b>Protein Pathways:</b>	Calcium signaling pathway, ErbB signaling pathway, Glioma, GnRH signaling pathway, Long-term potentiation, Melanogenesis, Neurotrophin signaling pathway, Olfactory transduction, Oocyte meiosis, Wnt signaling pathway

### Product images:



Coomassie blue staining of purified CAMK2B protein (Cat# [TP305669]). The protein was produced from HEK293T cells transfected with CAMK2B cDNA clone (Cat# [RC205669]) using MegaTran 2.0 (Cat# [TT210002]).