

Product datasheet for TP305669L

CAMK2B (NM_172081) Human Recombinant Protein

Product data:

Product Type:	Recombinant Proteins
Description:	Recombinant protein of human calcium/calmodulin-dependent protein kinase II beta (CAMK2B), transcript variant 5, 1 mg
Species:	Human
Expression Host:	HEK293T
Expression cDNA Clone or AA Sequence:	>RC205669 protein sequence Red=Cloning site Green=Tags(s)

MATTVTCTRFTDEYQLYEDIGKGAFSVRRRCVKLCTGHEYAAKIINTKKLSARDHQKLEREARICRLKHSNIVRLHDSISEEGFHYLVFDLVTGGELFEDIVAREYYSEADASHCIQQILEAVLHCHQMGVVRDLKPE NLLASKCKGAAVKLADFLAIEVQGDQQA WFGFAGTPGYLSPEVLRKEAYGKPVDIWACGVILYILLVGYPPFWEDEDQHKLYQQIKAGAYDFPSP EWDTVTPEAKNLINQMLTINPAKRITAEALHPWVCQRSTVASMMHRQETVECLKKFNARRKLGAILTTMLATRNFSAAKSLNKKADGVKPKQTNSTKNSAAATSPKGTLPAALES SDSA NTTIEDEDAKARKQEIIKTTEQLIEAVNNGDFEAYAKICDPGLTSFEPEALGNLVEGMDFHRFYFENLLAKNSKPIHTTILNPHVHVIGEDAACIAYIRLTQYIDGQGRPTSQSEETRVWHRDRDGKWQNVHFHCSGAPVAPLQ

TRTRPLEQKLISEEDLAANDILDYKDDDDKV

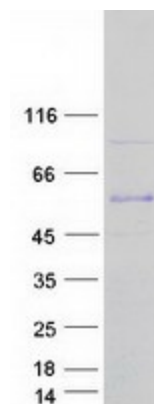
Tag:	C-Myc/DDK
Predicted MW:	56.2 kDa
Concentration:	>0.05 µg/µL as determined by microplate BCA method
Purity:	> 80% as determined by SDS-PAGE and Coomassie blue staining
Buffer:	25 mM Tris-HCl, 100 mM glycine, pH 7.3, 10% glycerol
Preparation:	Recombinant protein was captured through anti-DDK affinity column followed by conventional chromatography steps.
Note:	For testing in cell culture applications, please filter before use. Note that you may experience some loss of protein during the filtration process.
Storage:	Store at -80°C.



[View online »](#)

Stability:	Stable for 12 months from the date of receipt of the product under proper storage and handling conditions. Avoid repeated freeze-thaw cycles.
RefSeq:	NP_742078
Locus ID:	816
UniProt ID:	Q13554
RefSeq Size:	4097
Cytogenetics:	7p13
RefSeq ORF:	1509
Synonyms:	CAM2; CAMK2; CAMKB; CaMKIIbeta; MRD54
Summary:	The product of this gene belongs to the serine/threonine protein kinase family and to the Ca(2+)/calmodulin-dependent protein kinase subfamily. Calcium signaling is crucial for several aspects of plasticity at glutamatergic synapses. In mammalian cells, the enzyme is composed of four different chains: alpha, beta, gamma, and delta. The product of this gene is a beta chain. It is possible that distinct isoforms of this chain have different cellular localizations and interact differently with calmodulin. Alternative splicing results in multiple transcript variants. [provided by RefSeq, May 2014]
Protein Families:	Druggable Genome, Protein Kinase
Protein Pathways:	Calcium signaling pathway, ErbB signaling pathway, Glioma, GnRH signaling pathway, Long-term potentiation, Melanogenesis, Neurotrophin signaling pathway, Olfactory transduction, Oocyte meiosis, Wnt signaling pathway

Product images:



Coomassie blue staining of purified CAMK2B protein (Cat# [TP305669]). The protein was produced from HEK293T cells transfected with CAMK2B cDNA clone (Cat# [RC205669]) using MegaTran 2.0 (Cat# [TT210002]).