

## Product datasheet for **TP305668**

### TIMM10 (NM\_012456) Human Recombinant Protein

#### Product data:

Product Type:	Recombinant Proteins
Description:	Recombinant protein of human translocase of inner mitochondrial membrane 10 homolog (yeast) (TIMM10), nuclear gene encoding mitochondrial protein, 20 µg
Species:	Human
Expression Host:	HEK293T
Expression cDNA Clone or AA Sequence:	>RC205668 protein sequence <b>Red</b> =Cloning site <b>Green</b> =Tags(s)
	MDPLRAQQLAEELEVEMMADMYNRMTSACHRKCVPPhyKEAELSKGESVCLDRCVSKYLDIHERMGKLT ELSMQDEELMKRVQSSGPA
	<b>TRTRPLEQKLISEEDLAANDILDYKDDDDKV</b>
Tag:	C-Myc/DDK
Predicted MW:	10.2 kDa
Concentration:	>0.05 µg/µL as determined by microplate BCA method
Purity:	> 80% as determined by SDS-PAGE and Coomassie blue staining
Buffer:	25 mM Tris-HCl, 100 mM glycine, pH 7.3, 10% glycerol
Preparation:	Recombinant protein was captured through anti-DDK affinity column followed by conventional chromatography steps.
Note:	For testing in cell culture applications, please filter before use. Note that you may experience some loss of protein during the filtration process.
Storage:	Store at -80°C.
Stability:	Stable for 12 months from the date of receipt of the product under proper storage and handling conditions. Avoid repeated freeze-thaw cycles.
RefSeq:	<a href="#">NP_036588</a>
Locus ID:	26519
UniProt ID:	<a href="#">P62072</a>
RefSeq Size:	684



[View online »](#)

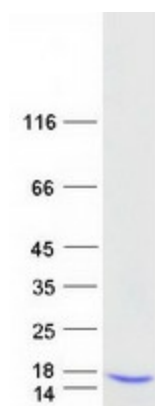
Cytogenetics: 11q12.1

RefSeq ORF: 270

Synonyms: TIM10; TIM10A; TIMM10A

**Summary:** The mitochondrial protein encoded by this gene belongs to a family of evolutionarily conserved proteins that are organized in heterooligomeric complexes in the mitochondrial intermembrane space. These proteins mediate the import and insertion of hydrophobic membrane proteins into the mitochondrial inner membrane, functioning as intermembrane space chaperones for the highly insoluble carrier proteins. [provided by RefSeq, Nov 2011]

### Product images:



Coomassie blue staining of purified TIMM10 protein (Cat# TP305668). The protein was produced from HEK293T cells transfected with TIMM10 cDNA clone (Cat# [RC205668]) using MegaTran 2.0 (Cat# [TT210002]).