

Product datasheet for TP305665

FLVCR2 (NM_017791) Human Recombinant Protein

Product data:

Product Type:	Recombinant Proteins
Description:	Recombinant protein of human feline leukemia virus subgroup C cellular receptor family, member 2 (FLVCR2), 20 µg
Species:	Human
Expression Host:	HEK293T
Expression cDNA Clone or AA Sequence:	>RC205665 protein sequence Red=Cloning site Green=Tags(s)

MVNEGPNQEESSDTPVPESALQADPSVSVHPSVSVHPSVSINPSVSVHPSSSAHPSALAQPSSGLAHPSSS
 GPEDLSVIKVSRRRWAVLVFSCYSMCNSFQWIQYGSINNIFMHFYGVSAFAIDWLSMCYMLTYIPLLLP
 VAWLLEKFLRRTIALTGSA LNCLGAWVKLGSLKPHLFPVTVVGQLICSVAQVFILGMPRIASVWFGANE
 VSTACSVAVFGNQLGIAIGFLVPPVLPNIEDRDELAYHISIMFYIIGGVATLLLLIIVFKEKPKYPP
 SRAQSLSYALTSPDASYLGSARLFKLNLFVLLVITYGLNAGAFYALSTLLNRMVIWHYPGEEVNAGRIG
 LTI VIAGMLGAVISGIWLD RSKTYKETTLVYIMTLVGMVVYTF TLNLGHLWVVFITAGTMGFFMTGYLP
 LGFEFAVELTYPESEGISSGLLNISAQVFGIIFTISQGGQIIDNYGTPKGNIFLCVFLT LGAALTAFIKAD
 LRRQKANKETLENKLQEEEEESNTSKVPTAVSEDHL

TRTRPLEQKLISEEDLAANDILDYKDDDDKV

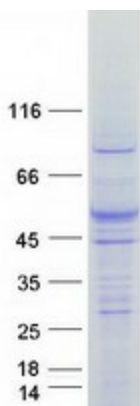
Tag:	C-Myc/DDK
Predicted MW:	57.1 kDa
Concentration:	>0.05 µg/µL as determined by microplate BCA method
Purity:	> 80% as determined by SDS-PAGE and Coomassie blue staining
Buffer:	25 mM Tris-HCl, 100 mM glycine, pH 7.3, 10% glycerol
Preparation:	Recombinant protein was captured through anti-DDK affinity column followed by conventional chromatography steps.
Note:	For testing in cell culture applications, please filter before use. Note that you may experience some loss of protein during the filtration process.
Storage:	Store at -80°C.



[View online »](#)

Stability:	Stable for 12 months from the date of receipt of the product under proper storage and handling conditions. Avoid repeated freeze-thaw cycles.
RefSeq:	NP_060261
Locus ID:	55640
UniProt ID:	Q9UPI3
RefSeq Size:	3669
Cytogenetics:	14q24.3
RefSeq ORF:	1578
Synonyms:	C14orf58; CCT; EPV; FLVCRL14q; MFSD7C; PVHH; SLC49A2
Summary:	This gene encodes a member of the major facilitator superfamily. The encoded transmembrane protein is a calcium transporter. Unlike the related protein feline leukemia virus subgroup C receptor 1, the protein encoded by this locus does not bind to feline leukemia virus subgroup C envelope protein. The encoded protein may play a role in development of brain vascular endothelial cells, as mutations at this locus have been associated with proliferative vasculopathy and hydranencephaly-hydrocephaly syndrome. Alternatively spliced transcript variants have been described.[provided by RefSeq, Aug 2010]
Protein Families:	Transmembrane

Product images:



Coomassie blue staining of purified FLVCR2 protein (Cat# TP305665). The protein was produced from HEK293T cells transfected with FLVCR2 cDNA clone (Cat# [RC205665]) using MegaTran 2.0 (Cat# [TT210002]).