

## Product datasheet for **TP305664L**

### **C20orf11 (GID8) (NM\_017896) Human Recombinant Protein**

#### Product data:

Product Type:	Recombinant Proteins
Description:	Recombinant protein of human chromosome 20 open reading frame 11 (C20orf11), 1 mg
Species:	Human
Expression Host:	HEK293T
Expression cDNA Clone or AA Sequence:	>RC205664 protein sequence <b>Red</b> =Cloning site <b>Green</b> =Tags(s)
	 MSYAEKPDEITKDEWMEKLNHLVQRADMNRLIMNYLVTEGFKEAAEKFRMESGIEPSLDLETLDERIKI REMILKGQIQEAIALINSLHPELLDTNRYLYFHLQQQHLLIELIRQRETEAALEFAQTQLAEQGEEESRECL TEMERTLALLAFDSPEESPFGLLHTMQRQKVVSEVNQAVLDYENRESTPKLAKLLKLLLWAQNELDQKK VKYPKMTDLSKGVIEEPK  <b>TRTRPLEQKLISEEDLAANDILDYKDDDDKV</b>
Tag:	C-Myc/DDK
Predicted MW:	26.6 kDa
Concentration:	>0.05 µg/µL as determined by microplate BCA method
Purity:	> 80% as determined by SDS-PAGE and Coomassie blue staining
Buffer:	25 mM Tris-HCl, 100 mM glycine, pH 7.3, 10% glycerol
Preparation:	Recombinant protein was captured through anti-DDK affinity column followed by conventional chromatography steps.
Note:	For testing in cell culture applications, please filter before use. Note that you may experience some loss of protein during the filtration process.
Storage:	Store at -80°C.
Stability:	Stable for 12 months from the date of receipt of the product under proper storage and handling conditions. Avoid repeated freeze-thaw cycles.
RefSeq:	<a href="#">NP_060366</a>
Locus ID:	54994
UniProt ID:	<a href="#">Q9NWU2</a>



[View online »](#)

RefSeq Size: 4440

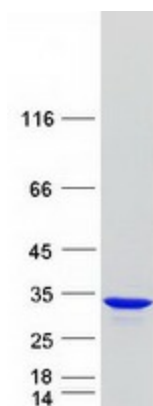
Cytogenetics: 20q13.33

RefSeq ORF: 684

Synonyms: C20orf11; TWA1

**Summary:** Core component of the CTLH E3 ubiquitin-protein ligase complex that selectively accepts ubiquitin from UBE2H and mediates ubiquitination and subsequent proteasomal degradation of the transcription factor HBP1 (PubMed:29911972). Acts as a positive regulator of Wnt signaling pathway by promoting beta-catenin (CTNNB1) nuclear accumulation (PubMed:28829046).[UniProtKB/Swiss-Prot Function]

### Product images:



Coomassie blue staining of purified GID8 protein (Cat# [TP305664]). The protein was produced from HEK293T cells transfected with GID8 cDNA clone (Cat# [RC205664]) using MegaTran 2.0 (Cat# [TT210002]).