

## Product datasheet for TP305652M

### RPL26L1 (NM\_016093) Human Recombinant Protein

#### Product data:

|                                       |   |
|---------------------------------------|---|
| Product Type:                         | Recombinant Proteins  |
| Description:                          | Recombinant protein of human ribosomal protein L26-like 1 (RPL26L1), 100 µg   |
| Species:                              | Human   |
| Expression Host:                      | HEK293T   |
| Expression cDNA Clone or AA Sequence: | >RC205652 protein sequence<br><b>Red</b> =Cloning site <b>Green</b> =Tags(s)  |
|                                       | MKFNPFVTSDRSKNRKRHFNAPSHVRRKIMSSPLSKELRQKYNVRSMPIRKDDDEVQVVRGHYKGQQIGKV<br>VQVYRKKYVIYIERVQREKANGTTVHVGIHPKVVITRLKLDKDRKKILERKAKSRQVGKEKGKYKEELI<br>EKMQE |
|                                       | <b>TRTRPLEQKLISEEDLAANDILDYKDDDDKV</b>  |
| Tag:                                  | C-Myc/DDK   |
| Predicted MW:                         | 17.1 kDa  |
| Concentration:                        | >0.05 µg/µL as determined by microplate BCA method  |
| Purity:                               | > 80% as determined by SDS-PAGE and Coomassie blue staining   |
| Buffer:                               | 25 mM Tris-HCl, 100 mM glycine, pH 7.3, 10% glycerol  |
| Preparation:                          | Recombinant protein was captured through anti-DDK affinity column followed by conventional chromatography steps.  |
| Note:                                 | For testing in cell culture applications, please filter before use. Note that you may experience some loss of protein during the filtration process.      |
| Storage:                              | Store at -80°C.   |
| Stability:                            | Stable for 12 months from the date of receipt of the product under proper storage and handling conditions. Avoid repeated freeze-thaw cycles.             |
| RefSeq:                               | <a href="#">NP_057177</a>   |
| Locus ID:                             | 51121   |
| UniProt ID:                           | <a href="#">Q9UNX3</a>  |
| RefSeq Size:                          | 723   |



[View online »](#)

Cytogenetics: 5q35.1

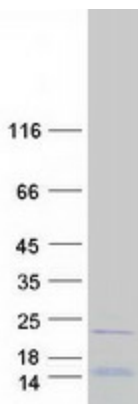
RefSeq ORF: 435

Synonyms: RPL26P1

Summary: This gene encodes a protein that shares high sequence similarity with ribosomal protein L26. Alternative splicing results in multiple transcript variants encoding the same protein. [provided by RefSeq, Dec 2015]

Protein Pathways: Ribosome

### Product images:



Coomassie blue staining of purified RPL26L1 protein (Cat# [TP305652]). The protein was produced from HEK293T cells transfected with RPL26L1 cDNA clone (Cat# [RC205652]) using MegaTran 2.0 (Cat# [TT210002]).