

Product datasheet for **TP305652L**

RPL26L1 (NM_016093) Human Recombinant Protein

Product data:

Product Type:	Recombinant Proteins
Description:	Recombinant protein of human ribosomal protein L26-like 1 (RPL26L1), 1 mg
Species:	Human
Expression Host:	HEK293T
Expression cDNA Clone or AA Sequence:	>RC205652 protein sequence Red =Cloning site Green =Tags(s)
	 MKFNPFVTSRDRSKNRKRHFNAPSHVRRKIMSSPLSKELRQKYNVRSMPIRKDDDEVQVVRGHYKGQQIGKV VQVYRKKYVIYIERVQREKANGTTVHVGIHPKVVITRLKLDKDRKKILERKAKSRQVGKEKGYKEELI EKMQE TRTRPLEQKLISEEDLAANDILDYKDDDDKV
Tag:	C-Myc/DDK
Predicted MW:	17.1 kDa
Concentration:	>0.05 µg/µL as determined by microplate BCA method
Purity:	> 80% as determined by SDS-PAGE and Coomassie blue staining
Buffer:	25 mM Tris-HCl, 100 mM glycine, pH 7.3, 10% glycerol
Preparation:	Recombinant protein was captured through anti-DDK affinity column followed by conventional chromatography steps.
Note:	For testing in cell culture applications, please filter before use. Note that you may experience some loss of protein during the filtration process.
Storage:	Store at -80°C.
Stability:	Stable for 12 months from the date of receipt of the product under proper storage and handling conditions. Avoid repeated freeze-thaw cycles.
RefSeq:	NP_057177
Locus ID:	51121
UniProt ID:	Q9UNX3
RefSeq Size:	723



[View online »](#)

Cytogenetics: 5q35.1

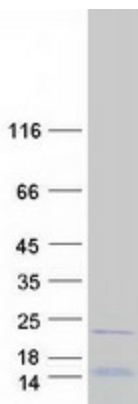
RefSeq ORF: 435

Synonyms: RPL26P1

Summary: This gene encodes a protein that shares high sequence similarity with ribosomal protein L26. Alternative splicing results in multiple transcript variants encoding the same protein. [provided by RefSeq, Dec 2015]

Protein Pathways: Ribosome

Product images:



Coomassie blue staining of purified RPL26L1 protein (Cat# [TP305652]). The protein was produced from HEK293T cells transfected with RPL26L1 cDNA clone (Cat# [RC205652]) using MegaTran 2.0 (Cat# [TT210002]).