

Product datasheet for TP305652

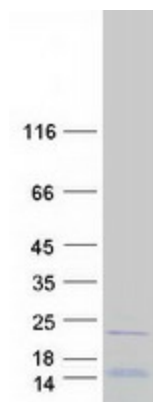
RPL26L1 (NM_016093) Human Recombinant Protein

Product data:

Product Type:	Recombinant Proteins
Description:	Recombinant protein of human ribosomal protein L26-like 1 (RPL26L1)
Species:	Human
Expression Host:	HEK293T
Tag:	C-Myc/DDK
Predicted MW:	17.1 kDa
Concentration:	>50 ug/mL as determined by microplate BCA method
Purity:	> 80% as determined by SDS-PAGE and Coomassie blue staining
Buffer:	25 mM Tris.HCl, pH 7.3, 100 mM glycine, 10% glycerol
Preparation:	Recombinant protein was captured through anti-DDK affinity column followed by conventional chromatography steps.
Storage:	Store at -80°C.
Stability:	Stable for 12 months from the date of receipt of the product under proper storage and handling conditions. Avoid repeated freeze-thaw cycles.
RefSeq:	NP_057177
Locus ID:	51121
RefSeq Size:	723
Cytogenetics:	5q35.1
RefSeq ORF:	435
Synonyms:	RPL26P1
Summary:	This gene encodes a protein that shares high sequence similarity with ribosomal protein L26. Alternative splicing results in multiple transcript variants encoding the same protein. [provided by RefSeq, Dec 2015]
Protein Pathways:	Ribosome



[View online »](#)

Product images:

Coomassie blue staining of purified RPL26L1 protein (Cat# TP305652). The protein was produced from HEK293T cells transfected with RPL26L1 cDNA clone (Cat# [RC205652]) using MegaTran 2.0 (Cat# [TT210002]).