

Product datasheet for **TP305650L**

GPSM2 (NM_013296) Human Recombinant Protein

Product data:

Product Type: Recombinant Proteins
Description: Recombinant protein of human G-protein signaling modulator 2 (AGS3-like, C. elegans) (GPSM2), 1 mg
Species: Human
Expression Host: HEK293T
Expression cDNA Clone or AA Sequence: >RC205650 protein sequence
Red=Cloning site **Green**=Tags(s)

MREDHSFHVRYRMEASCLELALALEGERLCKSGDCRAGVSFFEAQVQGTEDLKTLSAIYSQLGNAYFYLDH
YAKALEYHHDLTLARTIGDQLGEAKASGNLGNLTKVLGNFDEAIVCCQRHLDISRELNDKVGARALYN
LGNVYHAKGKSFSGCPGPQDVGEFPEEVRDALQAAVDYFEEENLSLVTALGDRAAQGRAFGNLGNTHYLLGN
FRDAVIAHEQRLLIAKEFGDKAAERRAYSNLGNAYIFLGEFETASEYKKTLLARQLKDRAVEAQSCYS
LGNTYTLQDYEKADYHLKHLAIAQELNDRIGEGRACWSLGNAYTALGNHDQAMHFAEKHLEISREVG
KSGELTARLNLSLQMVGLSYSTNNSIMSENTEIDSSLNVRPKLGRRHSMENMELMKTPEKVQNWNS
EILAKQKPLIAKPSAKLLFVNRLKGGKYKTNSSSTKVLQDASNSIDHRIPNSQRKISADTIGDEGFFDLLS
RFQSNRMDDQRCLQEKNCHTASTTSSSTPPKMMMLKTSSVPVWSPNTDEFLLDASSQSRRLDDQRASFS
NLPGLRLTQNSQSVLSHLMNTDNKEADEDFDILVKCQGSRLDDQRCAPPPATTGKPTVPDEDFSLILR
SQGKRMDEQRVLLQRDQNRDQDFGLKDFLQNNALLEFKNSGKKSADH

TRTRPLEQKLISEEDLAANDILDYKDDDDKV

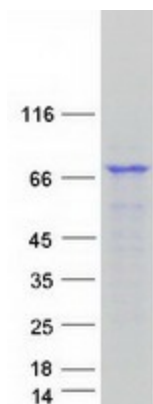
Tag: C-Myc/DDK
Predicted MW: 76.5 kDa
Concentration: >0.05 µg/µL as determined by microplate BCA method
Purity: > 80% as determined by SDS-PAGE and Coomassie blue staining
Buffer: 25 mM Tris-HCl, 100 mM glycine, pH 7.3, 10% glycerol
Preparation: Recombinant protein was captured through anti-DDK affinity column followed by conventional chromatography steps.
Note: For testing in cell culture applications, please filter before use. Note that you may experience some loss of protein during the filtration process.
Storage: Store at -80°C.



[View online »](#)

Stability:	Stable for 12 months from the date of receipt of the product under proper storage and handling conditions. Avoid repeated freeze-thaw cycles.
RefSeq:	NP_037428
Locus ID:	29899
UniProt ID:	P81274 , A0A024R0F8
RefSeq Size:	3039
Cytogenetics:	1p13.3
RefSeq ORF:	2031
Synonyms:	CMCS; DFNB82; LGN; PINS
Summary:	The protein encoded by this gene belongs to a family of proteins that modulate activation of G proteins, which transduce extracellular signals received by cell surface receptors into integrated cellular responses. The N-terminal half of this protein contains 10 copies of leu-gly-asn (LGN) repeat, and the C-terminal half contains 4 GoLoco motifs, which are involved in guanine nucleotide exchange. This protein may play a role in neuroblast division and in the development of normal hearing. Mutations in this gene are associated with autosomal recessive nonsyndromic deafness (DFNB82). Alternative splicing results in multiple transcript variants. [provided by RefSeq, Mar 2016]
Protein Families:	Druggable Genome

Product images:



Coomassie blue staining of purified GPSM2 protein (Cat# [TP305650]). The protein was produced from HEK293T cells transfected with GPSM2 cDNA clone (Cat# [RC205650]) using MegaTran 2.0 (Cat# [TT210002]).