

Product datasheet for **TP305642M**

Calpain 2 (CAPN2) (NM_001748) Human Recombinant Protein

Product data:

Product Type:	Recombinant Proteins
Description:	Recombinant protein of human calpain 2, (m/II) large subunit (CAPN2), 100 µg
Species:	Human
Expression Host:	HEK293T
Expression cDNA Clone or AA Sequence:	>RC205642 protein sequence Red =Cloning site Green =Tags(s)

MAGIAAKLAKDREAAEGLGSHERAIKYLNQDYEARNECLEAGTLFQDPSFPAIPSA LGFKELGPYSSKT
RGIEWKRPTEICADPQFIIGGATRTDICQ GALGDCWLLAAIASLTLNEEILARVPLNQSFQENYAGIFH
FQFWQYGEWVEVVDDRLPTKDGELLFVHSAEGSEFWSALLEKAYAKINGCYEALSGGATTEGFEDFTGG
IAEWYELKKPPP NLFKIIQKALQKGSLLGCSIDITSAADSEAITFQKLVKGHAYSVTGAE EVESNGSLQK
LIRIRNPWGEVEWTGRWNDNCPSWNTIDPEERERLRRHEDGEFWMFSDFLRHYSRLEICNLTPD TLTS
DTYKKWKLTKMDGNWRRGSTAGGCRNYPNTFWMNPQYLIKLEEEDEEEDGESGCTFLVGLIQKHRRRQR
KMGEDMHTIGFGIYEVPEELSGQTNIHLSKNFFLTNRARERSDTFINLREVLNRFKLPPGEYILVPSTFE
PNKDGDFCIRVFSEKKADYQAVDDEIEANLEEFDISEDIDDGFRRLFAQLAGEDAEISAFELQILRRV
LAKRQDIKSDGFSIETCKIMVDM LSDGSGKLGKLFYILWTKIQKYQKIYREIDVDRSGTMNSYEMRKA
LEEAGFKMPCQLHQVIVARFADDQLIIDFDNFVRCLVRLET LFKIFKQLDPENTGTIELDLISWLCFSVL

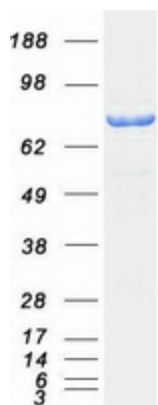
SGPTRTRPLEQKLISEEDLAANDILDYKDDDDKV

Tag:	C-Myc/DDK
Predicted MW:	79.8 kDa
Concentration:	>0.05 µg/µL as determined by microplate BCA method
Purity:	> 80% as determined by SDS-PAGE and Coomassie blue staining
Buffer:	25 mM Tris-HCl, 100 mM glycine, pH 7.3, 10% glycerol
Preparation:	Recombinant protein was captured through anti-DDK affinity column followed by conventional chromatography steps.
Note:	For testing in cell culture applications, please filter before use. Note that you may experience some loss of protein during the filtration process.
Storage:	Store at -80°C.



[View online »](#)

Stability:	Stable for 12 months from the date of receipt of the product under proper storage and handling conditions. Avoid repeated freeze-thaw cycles.
RefSeq:	NP_001739
Locus ID:	824
UniProt ID:	P17655 , Q59EF6
RefSeq Size:	3492
Cytogenetics:	1q41
RefSeq ORF:	2100
Synonyms:	CANP2; CANPL2; CANPml; mCANP
Summary:	The calpains, calcium-activated neutral proteases, are nonlysosomal, intracellular cysteine proteases. The mammalian calpains include ubiquitous, stomach-specific, and muscle-specific proteins. The ubiquitous enzymes consist of heterodimers with distinct large, catalytic subunits associated with a common small, regulatory subunit. This gene encodes the large subunit of the ubiquitous enzyme, calpain 2. Multiple heterogeneous transcriptional start sites in the 5' UTR have been reported. Two transcript variants encoding different isoforms have been found for this gene. [provided by RefSeq, Mar 2009]
Protein Families:	Druggable Genome, Protease
Protein Pathways:	Alzheimer's disease, Apoptosis, Focal adhesion

Product images:

Coomassie blue staining of purified CAPN2 protein (Cat# [TP305642]). The protein was produced from HEK293T cells transfected with CAPN2 cDNA clone (Cat# [RC205642]) using MegaTran 2.0 (Cat# [TT210002]).