

Product datasheet for TP305641

CDC25C (NM_001790) Human Recombinant Protein

Product data:

Product Type:	Recombinant Proteins
Description:	Recombinant protein of human cell division cycle 25 homolog C (S. pombe) (CDC25C), transcript variant 1, 20 µg
Species:	Human
Expression Host:	HEK293T
Expression cDNA Clone or AA Sequence:	>RC205641 protein sequence Red =Cloning site Green =Tags(s)

MSTELFSSTREEGSSGSGPSFRSNQRKMLNLLERDTSFTVCPDVPRTVPVGKFLGDSANLSILSGGTPKC
CLDLSNLSSGEITATQLTTSADLDETGHLDSSGLQEVHLAGMNHQHLMKCSQAQLLCSTPNGLDRGHRK
RDAMCSSANKENDNGNLVDSEMKYLGSPITVTKLKNPNLGEDQAEESDELMEFSLKDQEAKVSRSRSG
LYRSPSPENLNRPRKQVEKFKDNTIPDKVKKKYFSGQGKLRKGLCLKKTVSLCDITITQMLEEDSNQG
HLIGDFSKVCALPTVSGKHQDLKYVNPETVAALLSGKFQGLIEKFYVIDCRYPYELGGHIQGALNLYSQ
EELFNFFLKKPIVPLDTQKRIIVFHCFSSERGPRMCRCLREEDRSLNQYPALYPPELYILKGGYRDFE
PEYMECEPQSYCPMHHQDHKTELLRCRSQSKVQEGERQLREQIALLVKDMSP

TRTRPLEQKLISEEDLAANDILDYKDDDDKV

Tag:	C-Myc/DDK
Predicted MW:	53.2 kDa
Concentration:	>0.05 µg/µL as determined by microplate BCA method
Purity:	> 80% as determined by SDS-PAGE and Coomassie blue staining
Buffer:	25 mM Tris-HCl, 100 mM glycine, pH 7.3, 10% glycerol
Preparation:	Recombinant protein was captured through anti-DDK affinity column followed by conventional chromatography steps.
Note:	For testing in cell culture applications, please filter before use. Note that you may experience some loss of protein during the filtration process.
Storage:	Store at -80°C.
Stability:	Stable for 12 months from the date of receipt of the product under proper storage and handling conditions. Avoid repeated freeze-thaw cycles.



[View online >](#)

RefSeq: [NP_001781](#)

Locus ID: 995

UniProt ID: [P30307](#)

RefSeq Size: 2191

Cytogenetics: 5q31.2

RefSeq ORF: 1419

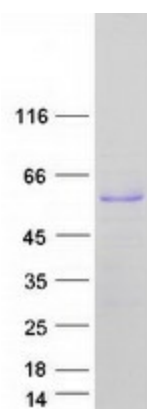
Synonyms: CDC25; PPP1R60

Summary: This gene encodes a conserved protein that plays a key role in the regulation of cell division. The encoded protein directs dephosphorylation of cyclin B-bound CDC2 and triggers entry into mitosis. It also suppresses p53-induced growth arrest. Multiple alternatively spliced transcript variants of this gene have been described. [provided by RefSeq, Dec 2015]

Protein Families: Druggable Genome, Phosphatase, Stem cell - Pluripotency

Protein Pathways: Cell cycle, Oocyte meiosis, Progesterone-mediated oocyte maturation

Product images:



Coomassie blue staining of purified CDC25C protein (Cat# TP305641). The protein was produced from HEK293T cells transfected with CDC25C cDNA clone (Cat# [RC205641]) using MegaTran 2.0 (Cat# [TT210002]).