

Product datasheet for **TP305627**

Prolactin (PRL) (NM_000948) Human Recombinant Protein

Product data:

Product Type: Recombinant Proteins
Description: Recombinant protein of human prolactin (PRL), 20 µg
Species: Human
Expression Host: HEK293T
Expression cDNA Clone or AA Sequence: >RC205627 protein sequence
Red=Cloning site **Green**=Tags(s)

MNIKGSPWKGSLLLLLVSNLLLCQSVAPLPICPGGAARCQVTLRDLFDRAVVLSHYIHNLSEMFSEFDK
RYTHGRGFITKAINSCHTSSLATPEDKEQAQMQMNQKDFLSLIVSILRSWNEPLYHLVTEVRGMQEAPAI
LSKAVEIEEQTKRLLLEGMELIVSQVHPETKENEIYPVWSGLPSLQMADEESRLSAYYNLLHCLRRDSHKI
DNYLKLLKCRIIHNNNC

TRTRPLE**Q**KLISEEDLAANDILDYKDDDDKV

Tag: C-Myc/DDK
Predicted MW: 25.7 kDa
Concentration: >0.05 µg/µL as determined by microplate BCA method
Purity: > 80% as determined by SDS-PAGE and Coomassie blue staining
Buffer: 25 mM Tris-HCl, 100 mM glycine, pH 7.3, 10% glycerol
Preparation: Recombinant protein was captured through anti-DDK affinity column followed by conventional chromatography steps.
Note: For testing in cell culture applications, please filter before use. Note that you may experience some loss of protein during the filtration process.
Storage: Store at -80°C.
Stability: Stable for 12 months from the date of receipt of the product under proper storage and handling conditions. Avoid repeated freeze-thaw cycles.
RefSeq: [NP_000939](#)
Locus ID: 5617
UniProt ID: [P01236](#), [Q5THQ0](#)



[View online »](#)

RefSeq Size: 1371

Cytogenetics: 6p22.3

RefSeq ORF: 681

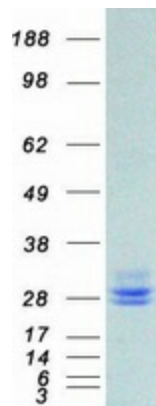
Synonyms: GHA1

Summary: This gene encodes the anterior pituitary hormone prolactin. This secreted hormone is a growth regulator for many tissues, including cells of the immune system. It may also play a role in cell survival by suppressing apoptosis, and it is essential for lactation. Alternative splicing results in multiple transcript variants that encode the same protein. [provided by RefSeq, Aug 2011]

Protein Families: Druggable Genome, Secreted Protein

Protein Pathways: Cytokine-cytokine receptor interaction, Jak-STAT signaling pathway, Neuroactive ligand-receptor interaction

Product images:



Coomassie blue staining of purified PRL protein (Cat# TP305627). The protein was produced from HEK293T cells transfected with PRL cDNA clone (Cat# [RC205627]) using MegaTran 2.0 (Cat# [TT210002]).