

Product datasheet for **TP305620M**

Ribonuclease A (RNASE1) (NM_198235) Human Recombinant Protein

Product data:

Product Type: Recombinant Proteins

Description: Recombinant protein of human ribonuclease, RNase A family, 1 (pancreatic) (RNASE1), transcript variant 1, 100 µg

Species: Human

Expression Host: HEK293T

Expression cDNA Clone or AA Sequence: >RC205620 protein sequence
Red=Cloning site **Green**=Tags(s)

MALEKSLVRLLLLVLILLVLGWWQPSLGKESRAKKFQRQHMDSDSSPSSSSTYCNQMMRRRNMTQGRCKP
VNTFVHEPLVDVQNVCFQEKVTCCKNGQGNCYKSNSSMHITDCRLTNGSRYPNCAVRTSPKERHIIVACEG
SPYVPVHFDASVEDST

TRTRPLEQKLISEEDLAANDILDYKDDDDKV

Tag: C-Myc/DDK

Predicted MW: 14.5 kDa

Concentration: >0.05 µg/µL as determined by microplate BCA method

Purity: > 80% as determined by SDS-PAGE and Coomassie blue staining

Buffer: 25 mM Tris-HCl, 100 mM glycine, pH 7.3, 10% glycerol

Preparation: Recombinant protein was captured through anti-DDK affinity column followed by conventional chromatography steps.

Note: For testing in cell culture applications, please filter before use. Note that you may experience some loss of protein during the filtration process.

Storage: Store at -80°C.

Stability: Stable for 12 months from the date of receipt of the product under proper storage and handling conditions. Avoid repeated freeze-thaw cycles.

RefSeq: [NP_937878](#)

Locus ID: 6035

UniProt ID: [P07998](#), [W0UV93](#)



[View online >](#)

RefSeq Size: 903

Cytogenetics: 14q11.2

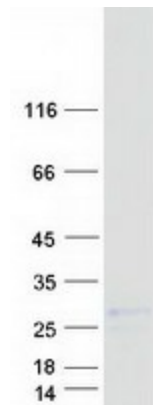
RefSeq ORF: 468

Synonyms: RAC1; RIB1; RNS1

Summary: This gene encodes a member of the pancreatic-type of secretory ribonucleases, a subset of the ribonuclease A superfamily. The encoded endonuclease cleaves internal phosphodiester RNA bonds on the 3'-side of pyrimidine bases. It prefers poly(C) as a substrate and hydrolyzes 2',3'-cyclic nucleotides, with a pH optimum near 8.0. The encoded protein is monomeric and more commonly acts to degrade ds-RNA over ss-RNA. Alternative splicing occurs at this locus and four transcript variants encoding the same protein have been identified. [provided by RefSeq, Jul 2008]

Protein Families: Secreted Protein, Transmembrane

Product images:



Coomassie blue staining of purified RNASE1 protein (Cat# [TP305620]). The protein was produced from HEK293T cells transfected with RNASE1 cDNA clone (Cat# [RC205620]) using MegaTran 2.0 (Cat# [TT210002]).