

Product datasheet for **TP305618M**

C10orf32 (BORCS7) (NM_144591) Human Recombinant Protein

Product data:

| | |
|---------------------------------------|--|
| Product Type: | Recombinant Proteins |
| Description: | Recombinant protein of human chromosome 10 open reading frame 32 (C10orf32), transcript variant 2, 100 µg |
| Species: | Human |
| Expression Host: | HEK293T |
| Expression cDNA Clone or AA Sequence: | >RC205618 protein sequence Red =Cloning site Green =Tags(s) |
| | MATGTPESQARFGQSVKGLLTEKVTTTCGTDVIALTKQVLKGSRSSELLGQAARNMVLQEDAILHSEDSLR KMAIITTHLQYQQEAIQKNVEQSSDLQDQLNHLLK TRTRPLEQKLISEEDLAANDILDYKDDDDKV |
| Tag: | C-Myc/DDK |
| Predicted MW: | 11.4 kDa |
| Concentration: | >0.05 µg/µL as determined by microplate BCA method |
| Purity: | > 80% as determined by SDS-PAGE and Coomassie blue staining |
| Buffer: | 25 mM Tris-HCl, 100 mM glycine, pH 7.3, 10% glycerol |
| Preparation: | Recombinant protein was captured through anti-DDK affinity column followed by conventional chromatography steps. |
| Note: | For testing in cell culture applications, please filter before use. Note that you may experience some loss of protein during the filtration process. |
| Storage: | Store at -80°C. |
| Stability: | Stable for 12 months from the date of receipt of the product under proper storage and handling conditions. Avoid repeated freeze-thaw cycles. |
| RefSeq: | <u>NP_653192</u> |
| Locus ID: | 119032 |
| UniProt ID: | <u>Q96B45</u> |
| RefSeq Size: | 1653 |



[View online »](#)

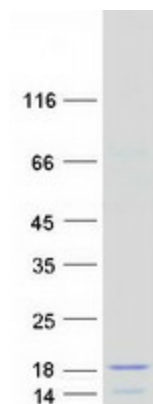
Cytogenetics: 10q24.32

RefSeq ORF: 315

Synonyms: C10orf32

Summary: As part of the BORC complex may play a role in lysosomes movement and localization at the cell periphery. Associated with the cytosolic face of lysosomes, the BORC complex may recruit ARL8B and couple lysosomes to microtubule plus-end-directed kinesin motor.
[UniProtKB/Swiss-Prot Function]

Product images:



Coomassie blue staining of purified BORCS7 protein (Cat# [TP305618]). The protein was produced from HEK293T cells transfected with BORCS7 cDNA clone (Cat# [RC205618]) using MegaTran 2.0 (Cat# [TT210002]).