

Product datasheet for TP305612L

SERPINB4 (NM_002974) Human Recombinant Protein

Product data:

Product Type:	Recombinant Proteins
Description:	Recombinant protein of human serpin peptidase inhibitor, clade B (ovalbumin), member 4 (SERPINB4), 1 mg
Species:	Human
Expression Host:	HEK293T
Expression cDNA Clone or AA Sequence:	>RC205612 protein sequence Red =Cloning site Green =Tags(s)

MNSLSEANTKFMFDLFQQFRKSKENNIFYSPISITSALGMVLLGAKDNTAQQISKVLHFDQVTENTTEKA
ATYHVDRSGNVHHQFQKLLTEFNKSTDAYELKIANKLFGEKTYQFLQEYLDIAIKKFYQTSVESTDFANAP
EESRKKINSWVESQTNEKIKNLFDPGTIGNDTTLVLVNAIYFKGQWENKFKKENTKEEFWPNKNTYKSV
QMMRQYNSFNFALLEDVQAKVLEIPYKGDLSMIVLLPNEIDGLQKLEEKLTAEKLMEWTSLQNMRETCV
DLHLPRFKMEESYDLKDLRTMGMVNIFNGDADLSGMTWSHGLSVSKVLHKAFFEVEEVEGVEAAAATAV
VVELSSPSTNEEFCCNHPFLFFIRQNKNTNSILFYGRFSSP

TRTRPLEQKLISEEDLAANDILDYKDDDDKV

Tag:	C-Myc/DDK
Predicted MW:	44.7 kDa
Concentration:	>0.05 µg/µL as determined by microplate BCA method
Purity:	> 80% as determined by SDS-PAGE and Coomassie blue staining
Buffer:	25 mM Tris-HCl, 100 mM glycine, pH 7.3, 10% glycerol
Preparation:	Recombinant protein was captured through anti-DDK affinity column followed by conventional chromatography steps.
Note:	For testing in cell culture applications, please filter before use. Note that you may experience some loss of protein during the filtration process.
Storage:	Store at -80°C.
Stability:	Stable for 12 months from the date of receipt of the product under proper storage and handling conditions. Avoid repeated freeze-thaw cycles.
RefSeq:	<u>NP_002965</u>



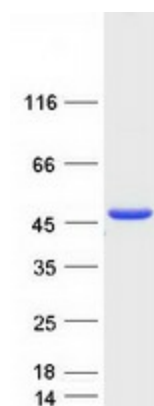
[View online »](#)

Locus ID:	6318
UniProt ID:	P48594
RefSeq Size:	1787
Cytogenetics:	18q21.33
RefSeq ORF:	1170
Synonyms:	LEUPIN; PI11; SCCA-2; SCCA1; SCCA2

Summary: The protein encoded by this gene is a member of the serpin family of serine protease inhibitors. The encoded protein is highly expressed in many tumor cells and can inactivate granzyme M, an enzyme that kills tumor cells. This protein, along with serpin B3, can be processed into smaller fragments that aggregate to form an autoantigen in psoriasis, probably by causing chronic inflammation. [provided by RefSeq, Jan 2017]

Protein Families: Druggable Genome, Secreted Protein

Product images:



Coomassie blue staining of purified SERPINB4 protein (Cat# [TP305612]). The protein was produced from HEK293T cells transfected with SERPINB4 cDNA clone (Cat# [RC205612]) using MegaTran 2.0 (Cat# [TT210002]).