

Product datasheet for **TP305598M**

LIN7 (LIN7B) (NM_022165) Human Recombinant Protein

Product data:

Product Type: Recombinant Proteins

Description: Recombinant protein of human lin-7 homolog B (C. elegans) (LIN7B), 100 µg

Species: Human

Expression Host: HEK293T

Expression cDNA Clone or AA Sequence: >RC205598 protein sequence
Red=Cloning site Green=Tags(s)

MAALVEPLGLERDVSRVAVELLERLQRSGELPPQKLQALQRVLQSRFCSAIREVYEQLYDTLDTGSAEIR
AHATAKATVAAFTASEGHAPRVVLPKTDEGLGFNIMGGKEQNSPIYISRVIPGGVADRHHGGLKRGDQL
LSVNGVSVEGEQHEKAVELLKAAQGSVKLVWRYTPRVLEEMEARFEKMRSAARRRQHQSYSSLESRG

TRTRPLEQKLISEEDLAANDILDYKDDDDKV

Tag: C-Myc/DDK

Predicted MW: 22.7 kDa

Concentration: >0.05 µg/µL as determined by microplate BCA method

Purity: > 80% as determined by SDS-PAGE and Coomassie blue staining

Buffer: 25 mM Tris-HCl, 100 mM glycine, pH 7.3, 10% glycerol

Preparation: Recombinant protein was captured through anti-DDK affinity column followed by conventional chromatography steps.

Note: For testing in cell culture applications, please filter before use. Note that you may experience some loss of protein during the filtration process.

Storage: Store at -80°C.

Stability: Stable for 12 months from the date of receipt of the product under proper storage and handling conditions. Avoid repeated freeze-thaw cycles.

RefSeq: [NP_071448](#)

Locus ID: 64130

UniProt ID: [Q9HAP6](#)

RefSeq Size: 755



[View online »](#)

Cytogenetics: 19q13.33

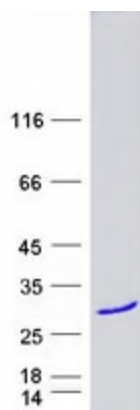
RefSeq ORF: 621

Synonyms: LIN-7B; MALS-2; MALS2; VELI2

Summary: Plays a role in establishing and maintaining the asymmetric distribution of channels and receptors at the plasma membrane of polarized cells. Forms membrane-associated multiprotein complexes that may regulate delivery and recycling of proteins to the correct membrane domains. The tripartite complex composed of LIN7 (LIN7A, LIN7B or LIN7C), CASK and APBA1 may have the potential to couple synaptic vesicle exocytosis to cell adhesion in brain. Ensures the proper localization of GRIN2B (subunit 2B of the NMDA receptor) to neuronal postsynaptic density and may function in localizing synaptic vesicles at synapses where it is recruited by beta-catenin and cadherin. Required to localize Kir2 channels, GABA transporter (SLC6A12) and EGFR/ERBB1, ERBB2, ERBB3 and ERBB4 to the basolateral membrane of epithelial cells. May increase the amplitude of ASIC3 acid-evoked currents by stabilizing the channel at the cell surface (By similarity).[UniProtKB/Swiss-Prot Function]

Protein Families: Druggable Genome

Product images:



Coomassie blue staining of purified LIN7B protein (Cat# [TP305598]). The protein was produced from HEK293T cells transfected with LIN7B cDNA clone (Cat# [RC205598]) using MegaTran 2.0 (Cat# [TT210002]).