

## Product datasheet for **TP305566M**

### SLFNL1 (NM\_144990) Human Recombinant Protein

#### Product data:

Product Type:	Recombinant Proteins
Description:	Recombinant protein of human schlafen-like 1 (SLFNL1), 100 µg
Species:	Human
Expression Host:	HEK293T
Expression cDNA Clone or AA Sequence:	>RC205566 protein sequence <b>Red</b> =Cloning site <b>Green</b> =Tags(s)

MTPMKRSVQTQVSEPFMESWGEESLPELPAEQSLTEYSDL EEAPSAHTLYVGH LNPQFSVPVLACLLRDT  
LERLEMPVAREHIEVRRRPRKAYALVQVTVHRDTLASLPWRLQTAL EEHLILKELAA S GKDLLLSEAQGP  
FSHREEKEEEEEDSGLSPGSPGSGVPLPTWPTHLPDRPQAQLQSCQGRPSGVCSDSAIVHQQIVGKD  
QLFQGAFLGSETRNMEFKRGSGEYLSLAFKHHVRRYVCAFLNSEGG SLLVGVEDSGLVQGI RCSRHRDED R  
ARLLVDSILQGFKPQIFPDAYTLTFIPVISTSETSVPLKVIRLTVHTPKAQSQPQLYQTDQGEVFLRRDG  
SIQGPLSASAIQEWCRQRWLVELGKLEEKMKALMMEKEQLQQQLQQHGPVSCTCCVL

**TR**TRPLEQKLISEEDLAANDILDYKDDDDKV

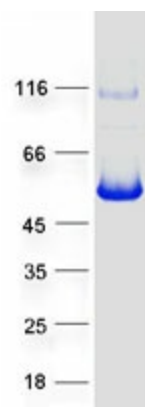
Tag:	C-Myc/DDK
Predicted MW:	45.4 kDa
Concentration:	>0.05 µg/µL as determined by microplate BCA method
Purity:	> 80% as determined by SDS-PAGE and Coomassie blue staining
Buffer:	25 mM Tris-HCl, 100 mM glycine, pH 7.3, 10% glycerol
Preparation:	Recombinant protein was captured through anti-DDK affinity column followed by conventional chromatography steps.
Note:	For testing in cell culture applications, please filter before use. Note that you may experience some loss of protein during the filtration process.
Storage:	Store at -80°C.
Stability:	Stable for 12 months from the date of receipt of the product under proper storage and handling conditions. Avoid repeated freeze-thaw cycles.
RefSeq:	<a href="#">NP_659427</a>
Locus ID:	200172



[View online »](#)

UniProt ID: [Q499Z3](#)  
RefSeq Size: 2007  
Cytogenetics: 1p34.2  
RefSeq ORF: 1221

### Product images:



Coomassie blue staining of purified SLFNL1 protein (Cat# [TP305566]). The protein was produced from HEK293T cells transfected with SLFNL1 cDNA clone (Cat# [RC205566]) using MegaTran 2.0 (Cat# [TT210002]).