

## Product datasheet for **TP305562M**

### LDHAL6B (NM\_033195) Human Recombinant Protein

#### Product data:

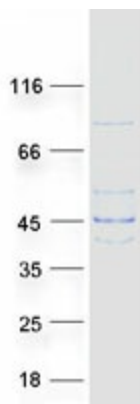
Product Type:	Recombinant Proteins
Description:	Recombinant protein of human lactate dehydrogenase A-like 6B (LDHAL6B), 100 µg
Species:	Human
Expression Host:	HEK293T
Expression cDNA Clone or AA Sequence:	>RC205562 protein sequence <b>Red</b> =Cloning site <b>Green</b> =Tags(s)
	<p>MSWTVPVVRASQRMSSVGANFLCLGMALCLRQATRIPLNGTWLFTPVSKMATVKSELIERFTSEKPVHHS KVSII GTG SVGMACAISILLKGLSDELALVDLDEDKLGKGETMDLQHGS PFTKMPNIVCSKDYFVTANSNL VIITAGARQEKGETRLNLVQRNVAIFKLMISSIVQYSPHCKLIIVSNPVDILTYVAVWKL SAFPKNRIIGS GCNLD TARFRFLIGQKLG IHSCHGWILGEHGDSSVPVWSGVNIAGVPLKDLNSDIGTDKDP EQWKNVH KEVTATAYEIIKMKGYT SWAIGLSVADLTESILKNLRRHPVSTITKGLYGIDEEVFLSIPCILGENGIT NLIKIKLTPEEEAHLKKS AKTLWEIQNKLL</p> <p><b>TRTRPLEQKLISEEDLAANDILDYKDDDDKV</b></p>
Tag:	C-Myc/DDK
Predicted MW:	41.8 kDa
Concentration:	>0.05 µg/µL as determined by microplate BCA method
Purity:	> 80% as determined by SDS-PAGE and Coomassie blue staining
Buffer:	25 mM Tris-HCl, 100 mM glycine, pH 7.3, 10% glycerol
Preparation:	Recombinant protein was captured through anti-DDK affinity column followed by conventional chromatography steps.
Note:	For testing in cell culture applications, please filter before use. Note that you may experience some loss of protein during the filtration process.
Storage:	Store at -80°C.
Stability:	Stable for 12 months from the date of receipt of the product under proper storage and handling conditions. Avoid repeated freeze-thaw cycles.
RefSeq:	<a href="#">NP_149972</a>
Locus ID:	92483



[View online »](#)

UniProt ID:	<a href="#">Q9BYZ2</a> , <a href="#">A0A140VJM9</a>
RefSeq Size:	1773
Cytogenetics:	15q22.2
RefSeq ORF:	1143
Synonyms:	LDH6B; LDHAL6; LDHL
Protein Pathways:	Cysteine and methionine metabolism, Glycolysis / Gluconeogenesis, Metabolic pathways, Propanoate metabolism, Pyruvate metabolism

### Product images:



Coomassie blue staining of purified LDHAL6B protein (Cat# [TP305562]). The protein was produced from HEK293T cells transfected with LDHAL6B cDNA clone (Cat# [RC205562]) using MegaTran 2.0 (Cat# [TT210002]).