

Product datasheet for **TP305548M**

DDHD1 (NM_030637) Human Recombinant Protein

Product data:

Product Type:	Recombinant Proteins
Description:	Recombinant protein of human DDHD domain containing 1 (DDHD1), 100 µg
Species:	Human
Expression Host:	HEK293T
Expression cDNA Clone or AA Sequence:	>RC205548 protein sequence Red =Cloning site Green =Tags(s)

MNYPGRGSPRSPEHNGRGGGGGAWELGSDARPAFGGGVCCFEHLPGGDPDDGDVPLALLRGEPGLHL
 APG
 TDDHNHHLALDPCLSDENYDFSSAESGSSLRYYSEGSGGGGSSLSLHPPQQPPLVPTNSGGGGATGGSP
 GERKRTLGGPAARHRYEVVTELGPEEVRWFYKEDKKTWKPFIFYDSLRIELAFRTLLQTTGARPQGGDR
 DGDHVCSTGPASSSGEDDDEDRACGFCQSTTGHEPEMVELVNIPEVCVRGGGLYEVDVTQGECPVYWN
 Q
 ADKIPVMRGQWFIDGTWQPLEEEESNLIEQEHLNCFRGQQMQENFDIEVSKSIDGKDAVHSFKLSRNHV
 D
 WHSVDEVYLYSDATTSKIARTVTQKLGFSSKASSSGTRLHRGYVEEATLEDKPSQTTHIVFVHIGIGQKMD
 QGRIIKNTAMMREAARKIEERHFSNHATHVEFLPVEWRSKLTLGDGTVDSITPDKVRGLRDLNSSAMDI
 MYYTSPLYRDELVKGLQQLNRLYSLFCSRNPDFEEKGGKVSIVSHSLGCVITYDIMTGWNVPVRLYEQLL
 QKEEELPDERWMSYEERHLLDELYITKRRLKEIEERLHGLKASSMTQTPALKFKVENFFCMGSPLAVFLA
 LRGIRPGNTGSQDHILPREICNRLNIFHPTDPVAYRLEPLILKRYSNISPVQIHWHYNTSNPLPYEHMKP
 SFLNPAKEPTSVSENEGISTIPSPVTSPLSRRHYGESITNIGKASILGAASIGKGLGGMLFSRFGSSST
 TQSSETSKDSMEDEKKPVASPSATTGTQTLPHSSSGFLDSALELDHRIDFELREGLVESRYWSAVTSHT
 AYWSSLDVALFLLTFMYKHEHDDDAKPNLDPI

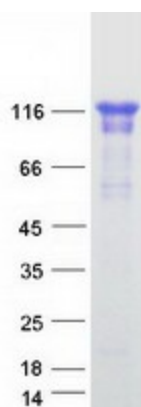
TRTRPLEQKLISEEDLAANDILDYKDDDDKV

Tag:	C-Myc/DDK
Predicted MW:	96.9 kDa
Concentration:	>0.05 µg/µL as determined by microplate BCA method
Purity:	> 80% as determined by SDS-PAGE and Coomassie blue staining
Buffer:	25 mM Tris-HCl, 100 mM glycine, pH 7.3, 10% glycerol


[View online »](#)

Preparation:	Recombinant protein was captured through anti-DDK affinity column followed by conventional chromatography steps.
Note:	For testing in cell culture applications, please filter before use. Note that you may experience some loss of protein during the filtration process.
Storage:	Store at -80°C.
Stability:	Stable for 12 months from the date of receipt of the product under proper storage and handling conditions. Avoid repeated freeze-thaw cycles.
RefSeq:	NP_085140
Locus ID:	80821
UniProt ID:	Q8NEL9
RefSeq Size:	12885
Cytogenetics:	14q22.1
RefSeq ORF:	2616
Synonyms:	iPLA1alpha; PA-PLA1; PAPLA1; SPG28
Summary:	This gene is a member of the intracellular phospholipase A1 gene family. The protein encoded by this gene preferentially hydrolyzes phosphatidic acid. It is a cytosolic protein with some mitochondrial localization, and is thought to be involved in the regulation of mitochondrial dynamics. Overexpression of this gene causes fragmentation of the tubular structures in mitochondria, while depletion of the gene results in mitochondrial tubule elongation. Deletion of this gene in male mice caused fertility defects, resulting from disruption in the organization of the mitochondria during spermiogenesis. In humans, mutations in this gene have been associated with hereditary spastic paraplegia (HSP), also known as Strumpell-Lorrain disease, or, familial spastic paraparesis (FSP). This inherited disorder is characterized by progressive weakness and spasticity of the legs. Alternative splicing results in multiple transcript variants encoding different isoforms. [provided by RefSeq, Aug 2015]

Product images:



Coomassie blue staining of purified DDHD1 protein (Cat# [TP305548]). The protein was produced from HEK293T cells transfected with DDHD1 cDNA clone (Cat# [RC205548]) using MegaTran 2.0 (Cat# [TT210002]).